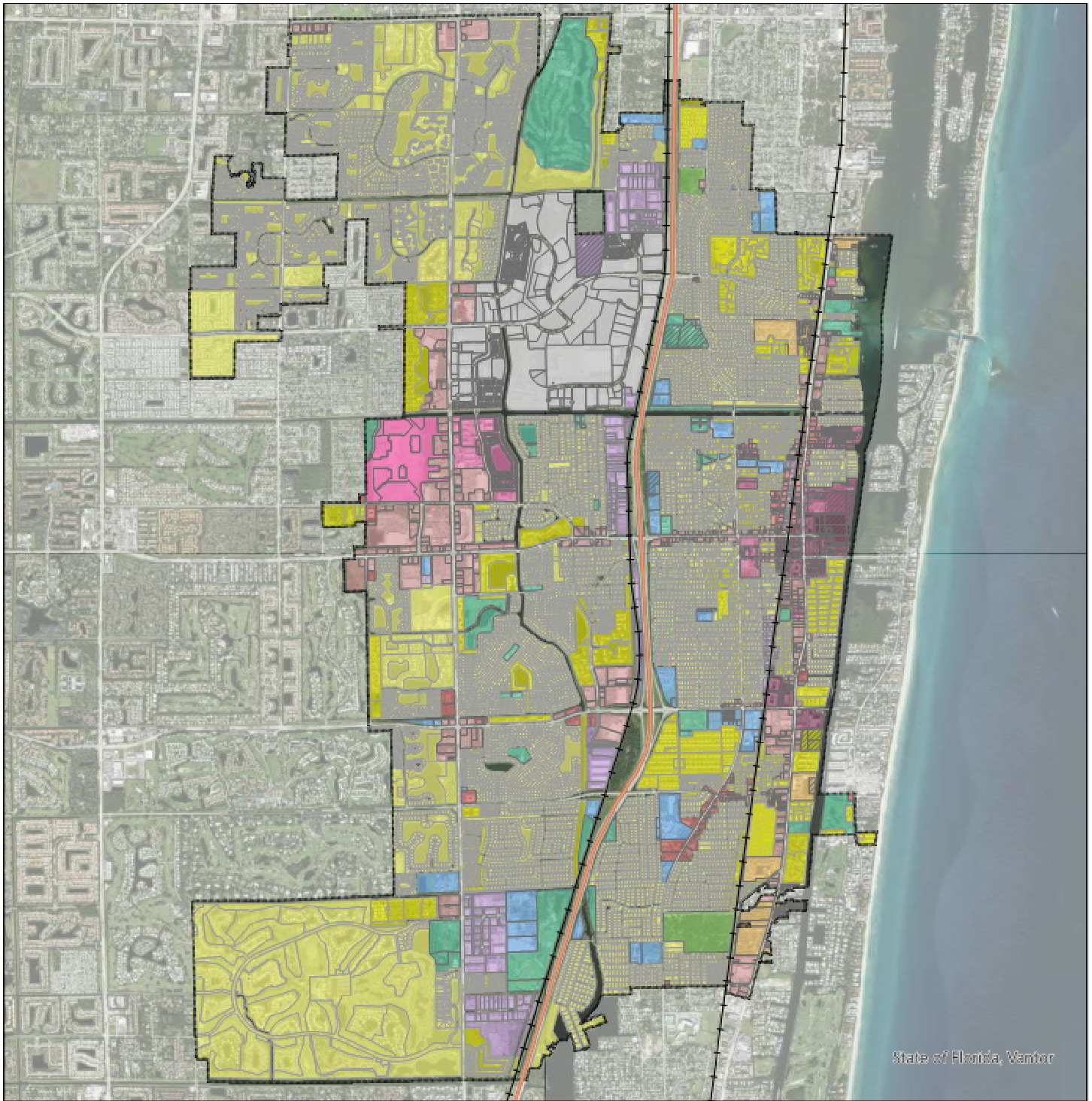




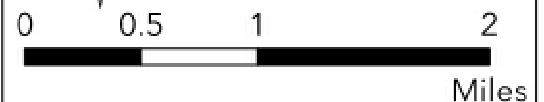
MAP SERIES



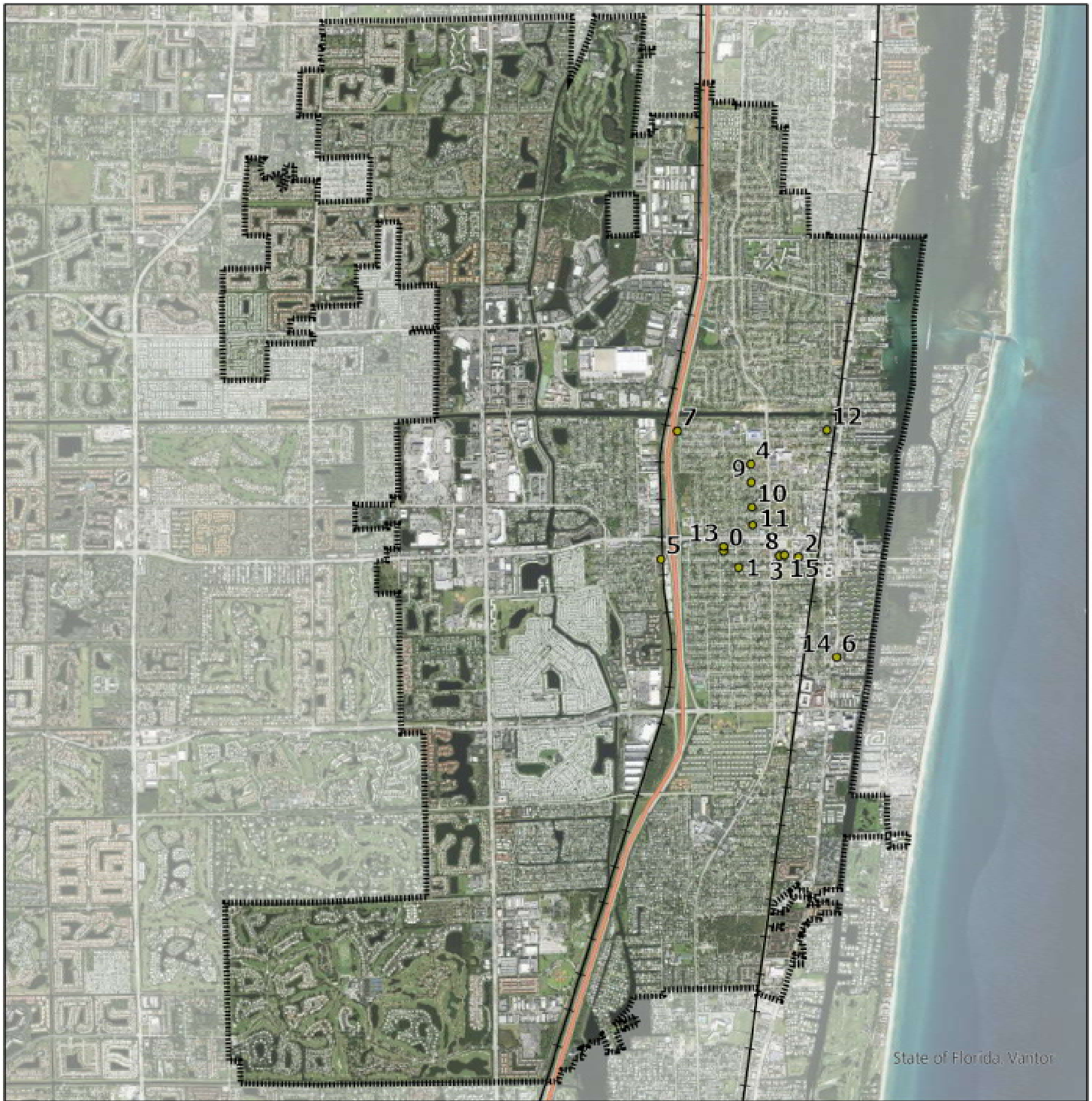
MS.1 - FUTURE LAND USE MAP

LEGEND

Boynton Beach Boundary	HIGH DENSITY RESIDENTIAL (HDR); 15 D.U./Acre	GENERAL COMMERCIAL (GC)
I-95	MEDIUM DENSITY RESIDENTIAL (MEDR); 11 D.U./Acre	LOCAL RETAIL COMMERCIAL (LRC)
Railroad	LOW DENSITY RESIDENTIAL (LDR); 7.5 D.U./Acre	MIXED USE HIGH (MXH); 80 D.U./Acre
CONSERVATION (CON)	SPECIAL HIGH DENSITY RESIDENTIAL (SHDR); 20 D.U./Acre	MIXED USE MEDIUM (MXM); 50 D.U./Acre
RECREATIONAL (R)	OFFICE COMMERCIAL (OC)	MIXED USE LOW (MXL); 20 D.U./Acre
INDUSTRIAL (I)		CONSERVATION OVERLAY (C/O)
PUBLIC & PRIVATE GOVERNMENTAL/ INSTITUTIONAL (PPGI)		
DEVELOPMENT OF REGIONAL IMPACT (DRI)		



State of Florida, Palm Beach County Open GIS Portal, City of Boynton Beach
Date: 12/5/2025



MS.2 - HISTORIC SITES

LEGEND

-  Boynton Beach Boundary
-  I-95
-  Railroad
-  Historic Site Locations

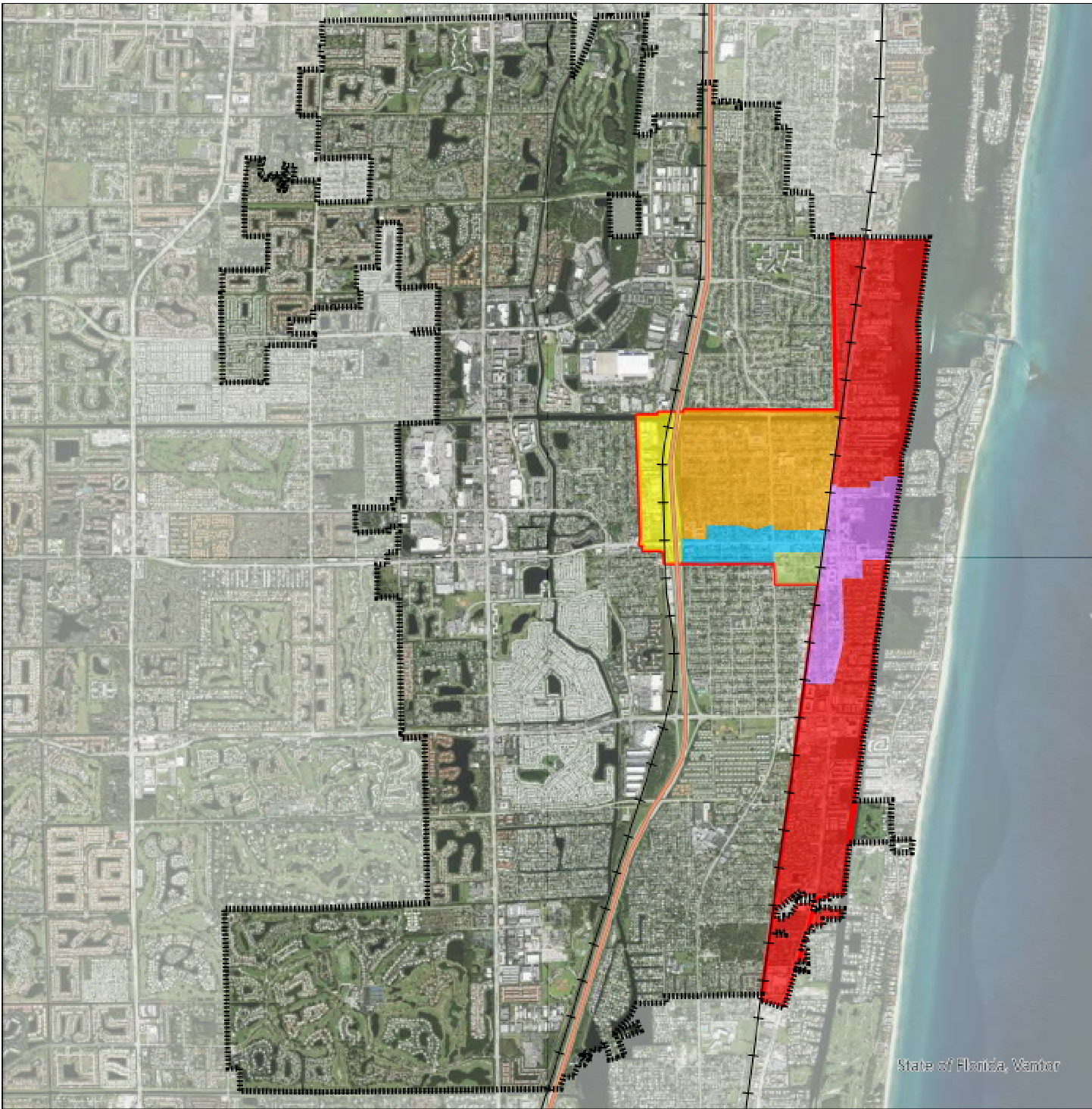


0 0.5 1 2

Miles

State of Florida, Palm Beach County Open GIS
 Portal, City of Boynton Beach
 Date: 5/13/2026

Site #	Site Name	Site Address
0	Emma MacKay House (Ed Bradley House)	330 NW 1ST AVE
1	Sophie Amichai House	229 SW 1st Ave
2	Oscar Magnusin House	211 E Ocean Ave
3	Boynton High School	125 E Ocvean Ave
4	Boynton Hills Lights 1	NW 1st St
5	Lake Boynton Estates Entry Feature	569 W Ocean Ave
6	Boynton Woman's Club	1010 S Federal Hwy
7	Barton Memorial Park Cemetery	561 NW 12th Ave
8	Boynton School	129 E Ocean Ave
9	Boynton Hills Lights 2	NW 1st St
10	Boynton Hills Lights 3	NW 1st St
11	Boynton Hills Lights 4	NW 1st St
12	Martha Light Meeks House	413 NE 12TH AVE
13	Audrey D. Gerger House	331 NW 1ST AVE
14	Boynton Woman's Club	1010 S Federal Hwy
15	Boynton School	129 E Ocean Ave









State of Florida, Vendor

MS.3 - COMMUNITY REDEVELOPMENT AGENCY (CRA) BOUNDARY

LEGEND

-  Boynton Beach Boundary
-  I-95
-  Railroad
-  CRA Boundary

- District
-  Cultural
 -  Downtown
 -  Federal
 -  Heart of Boynton
 -  Industrial Craft
 -  Boynton Beach Blvd

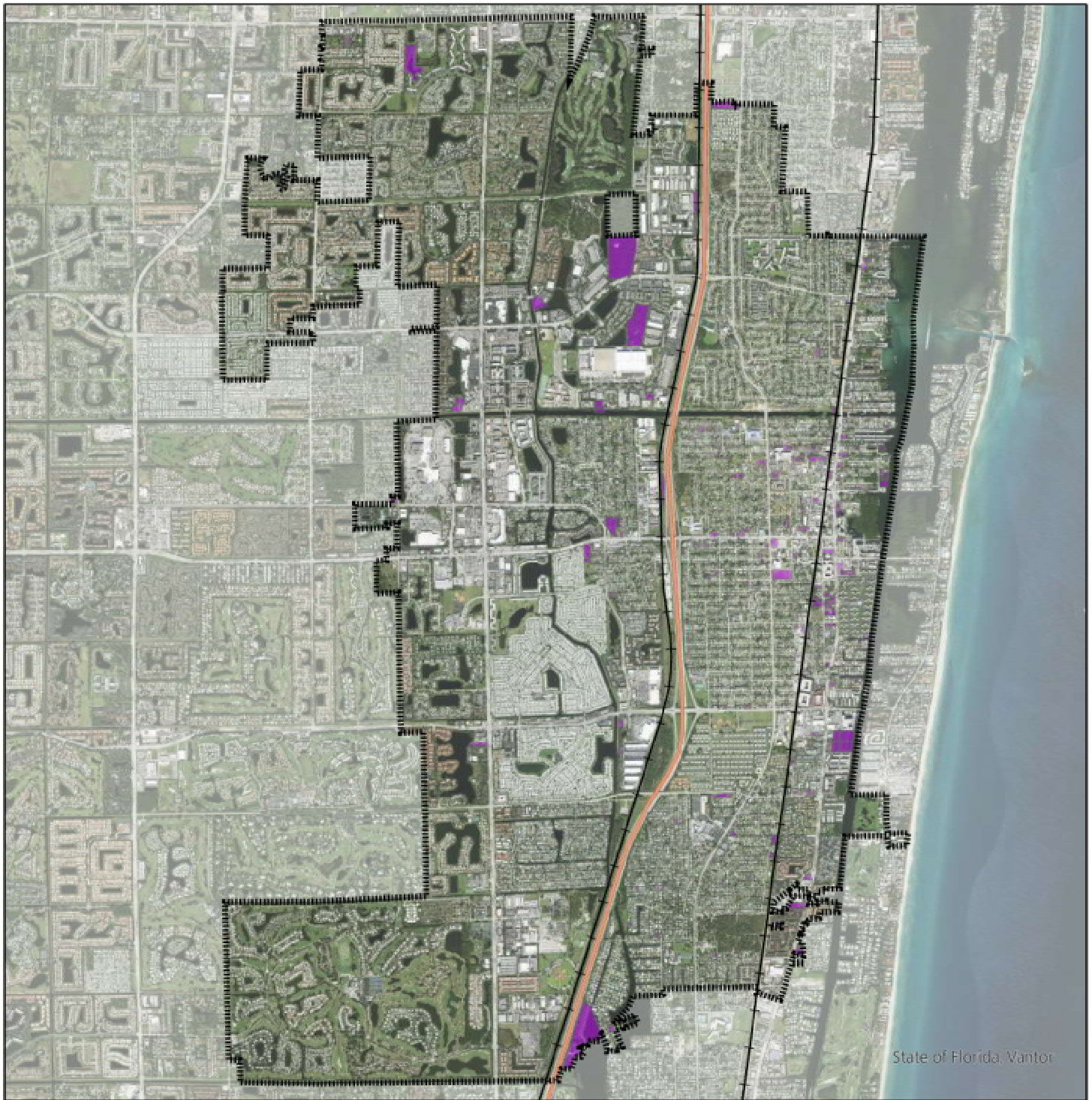


0 0.5 1 2



Miles

State of Florida, Palm Beach County Open GIS
 Portal, City of Boynton Beach
 Date: 12/5/2025



MS.4 - VACANT LANDS

LEGEND

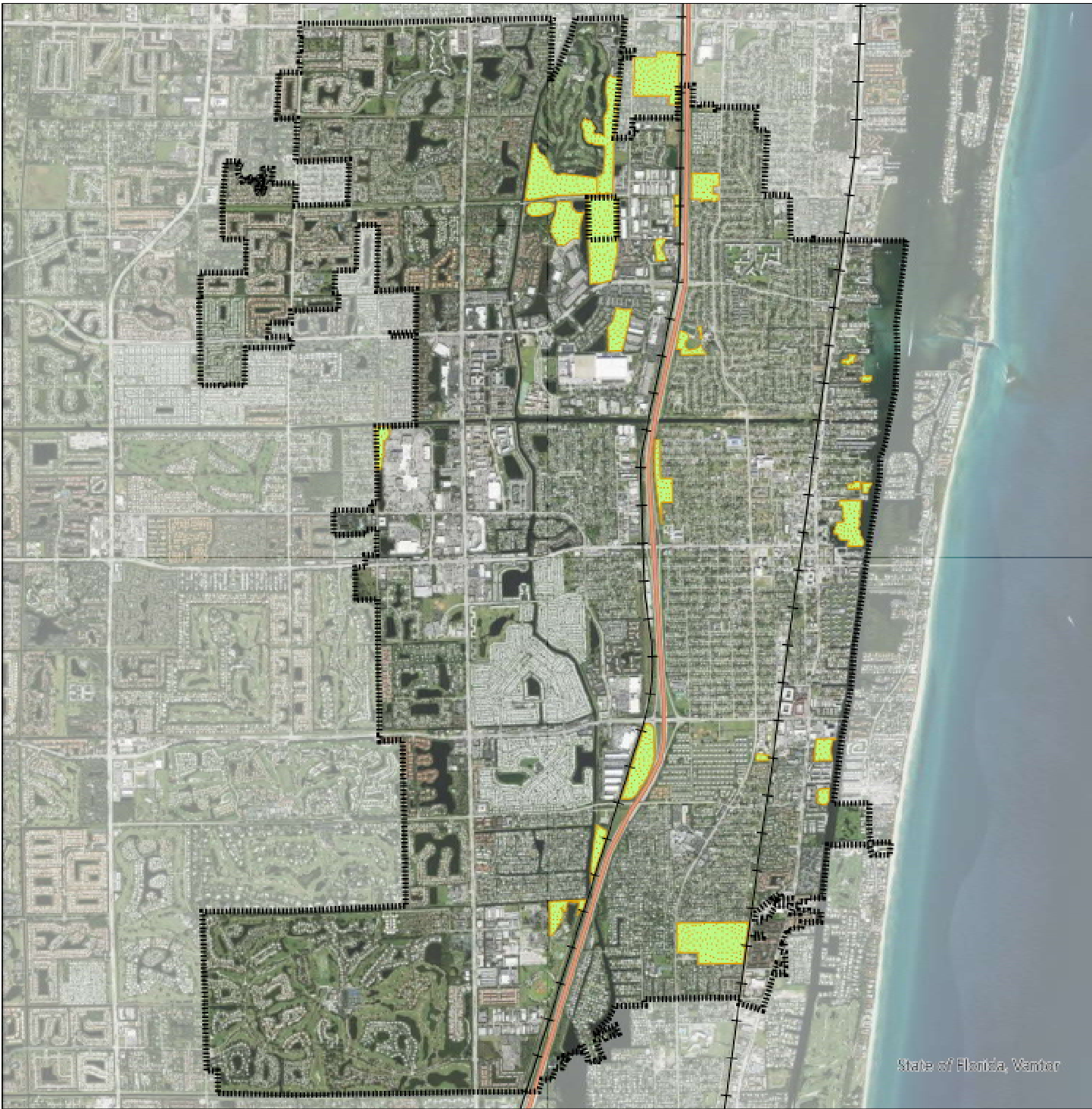
-  Boynton Beach Boundary
-  I-95
-  Railroad
-  Boynton Beach Vacant Land



0 0.5 1 2

Miles

State of Florida, Palm Beach County Open GIS
 Portal, City of Boynton Beach
 Date: 5/13/2026



MS.5 - ENVIRONMENTALLY SENSITIVE LANDS

LEGEND

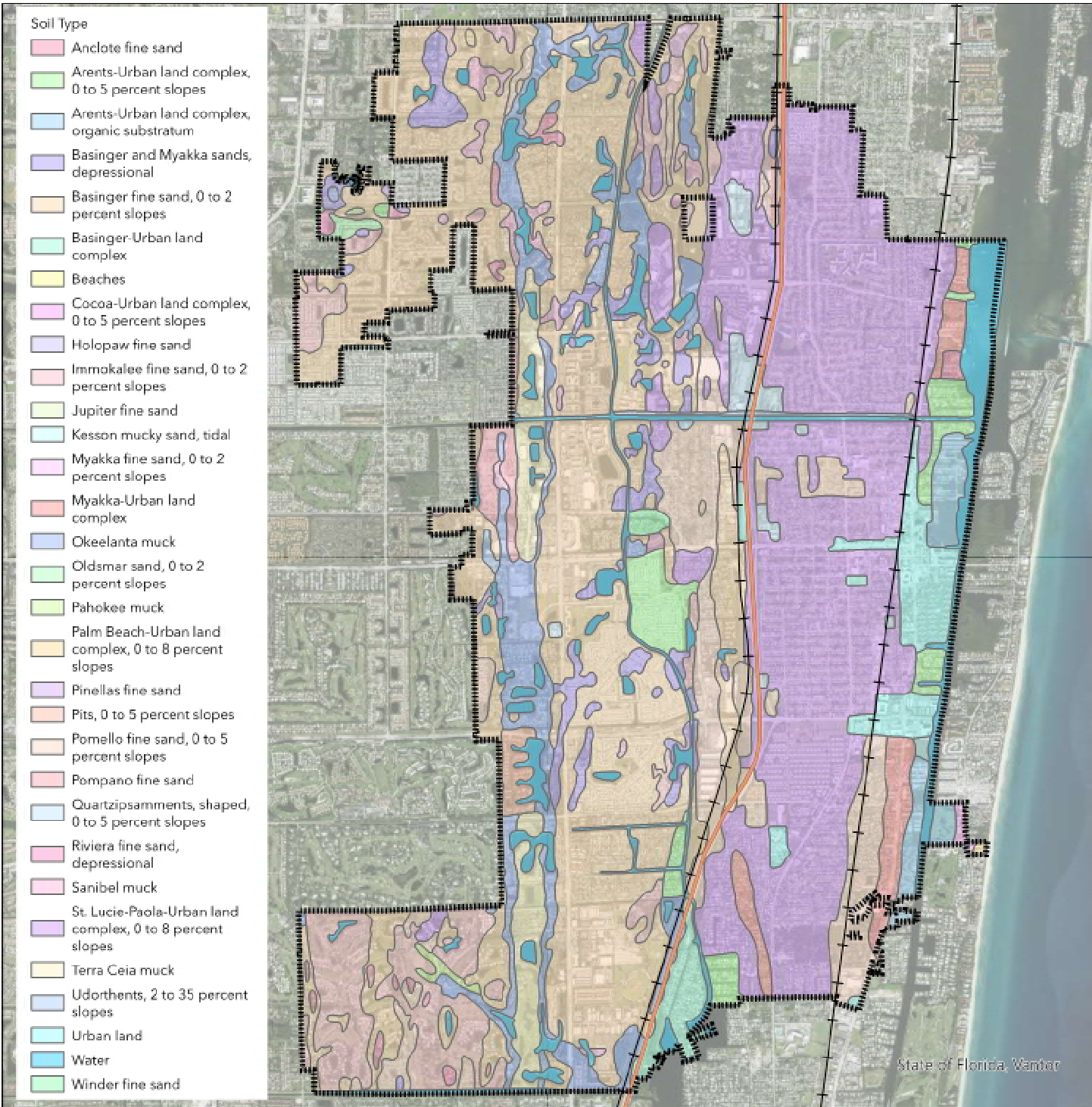
-  Boynton Beach Boundary
-  I-95
-  Railroad
-  Environmentally Sensitive Lands



0 0.5 1 2

Miles

State of Florida, Palm Beach County Open GIS
 Portal, City of Boynton Beach
 Date: 12/5/2025



MS.6 - SOILS

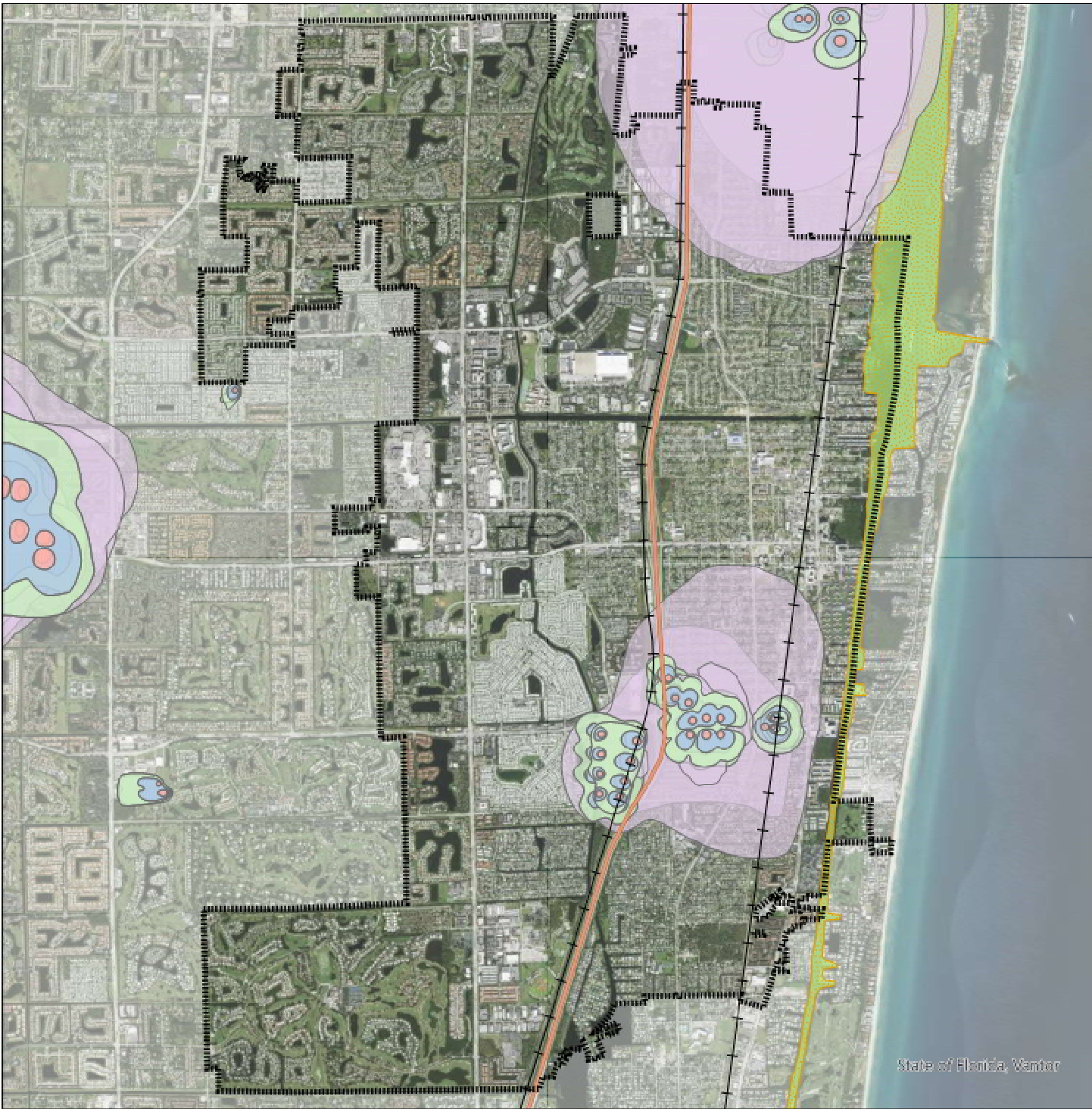
LEGEND

- Boynton Beach Boundary
- I-95
- Railroad





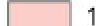
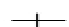
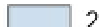



Miles

State of Florida, Palm Beach County Open GIS Portal, City of Boynton Beach
 Date: 12/5/2025



MS.7 - WELLFIELD ZONES AND ESTUARIES

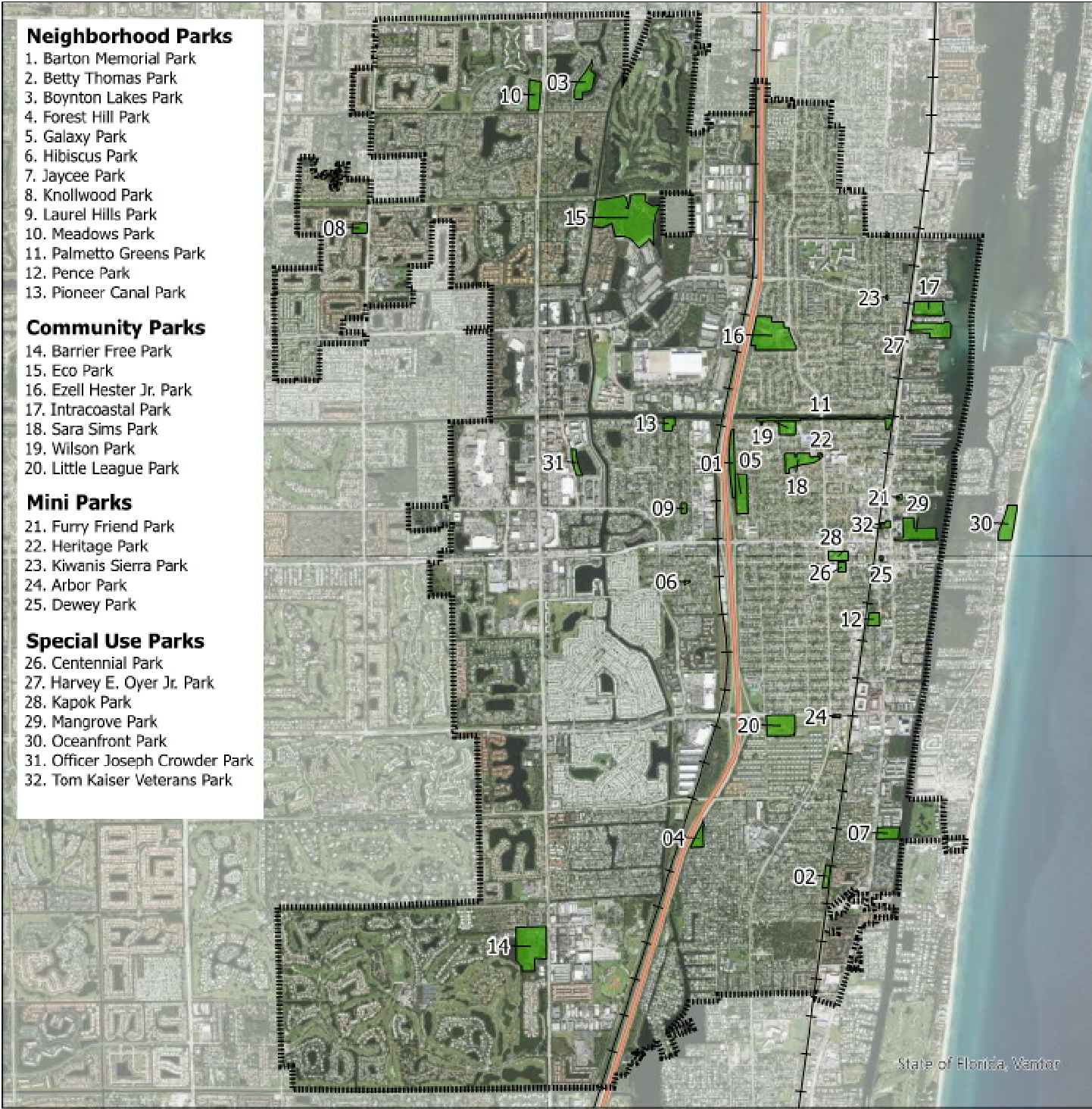
LEGEND

- | | |
|---|---|
|  Boynton Beach Boundary | Wellfield Zone |
|  I-95 |  1 |
|  Railroad |  2 |
|  Atlantic Estuary Shore District |  3 |
| |  4 |



Miles

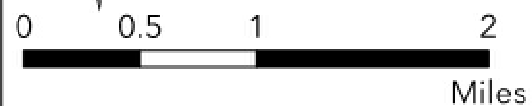
State of Florida, Palm Beach County Open GIS Portal, City of Boynton Beach, U.S. Environmental Protection Agency
Date: 12/5/2025



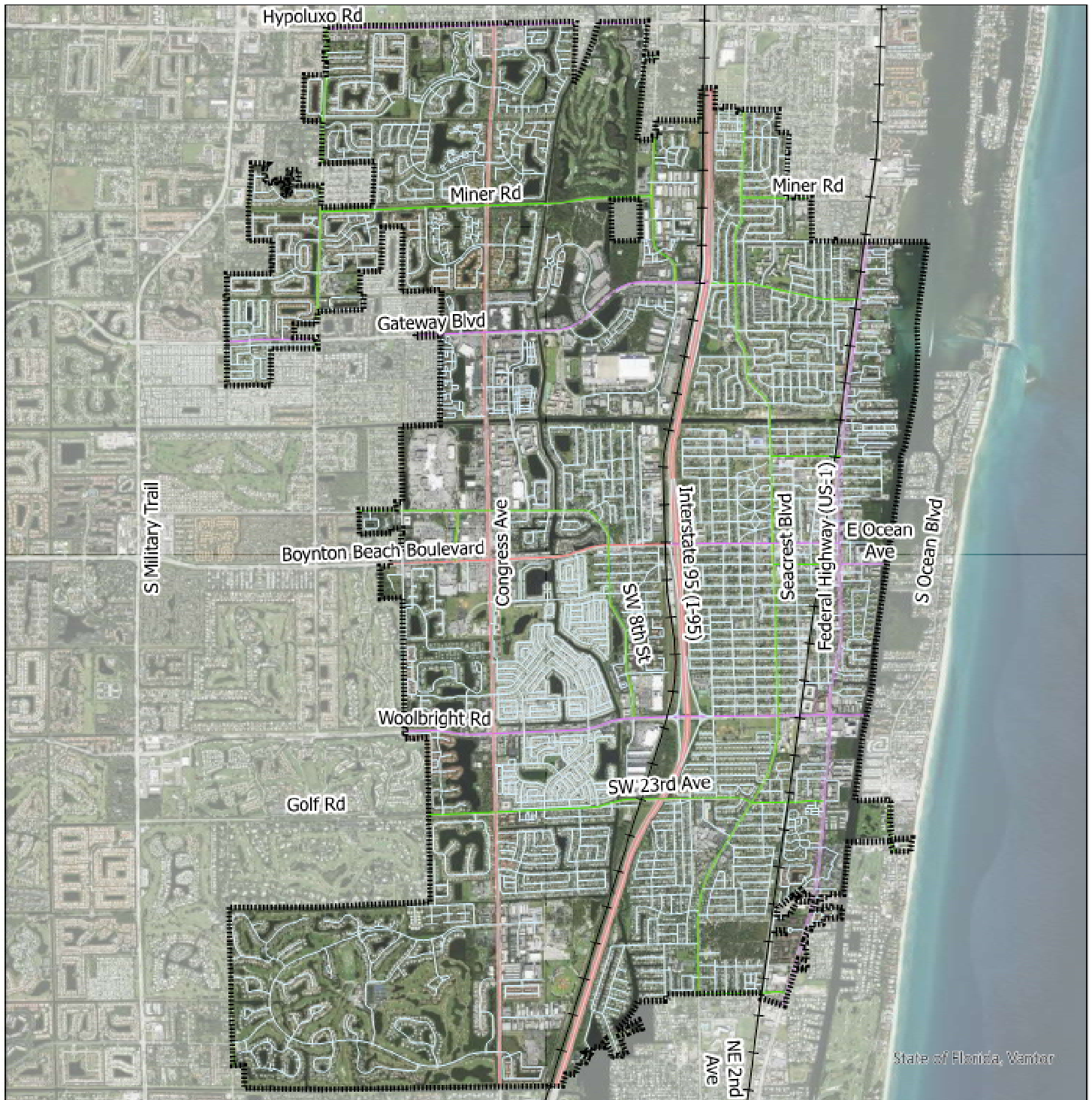
MS.8 - RECREATION AND OPEN SPACE

LEGEND

-  Boynton Beach Boundary
-  I-95
-  Railroad
-  Recreation and Open Spaces





State of Florida, Palm Beach County Open GIS
 Portal, City of Boynton Beach
 Date: 12/5/2025







MS.9 - FUNCTIONAL ROAD CLASSIFICATION

LEGEND

-  Boynton Beach Boundary
-  Railroad

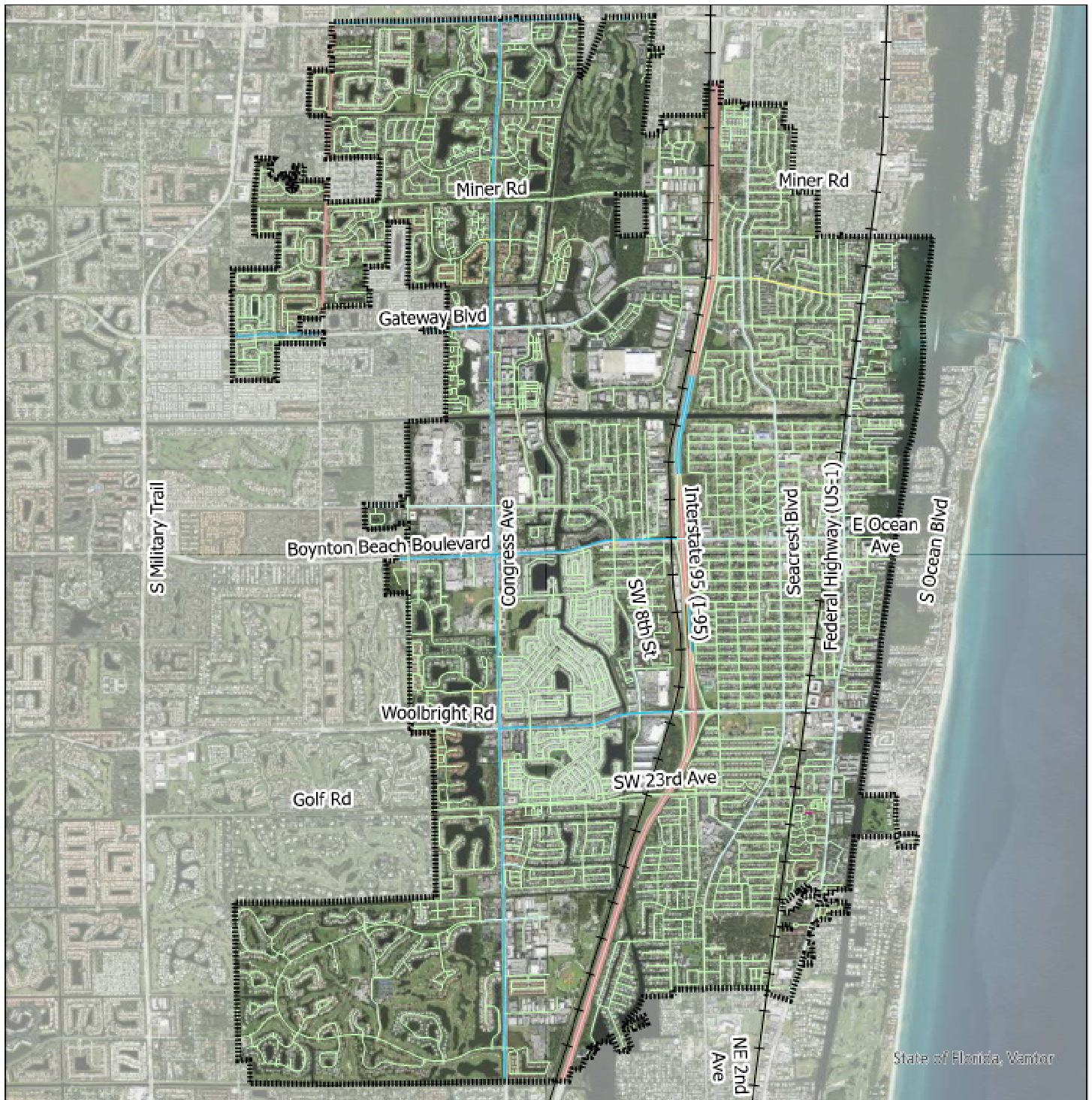
Functional Road Classification

-  Urban Local (U-LOC)
-  Urban Collector (U-COLL)
-  Urban Minor Arterial (U-MA)
-  Urban Principal Arterial (U-PA)



Miles

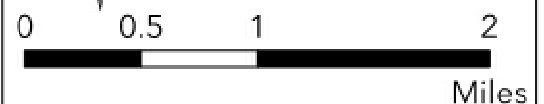
State of Florida, Palm Beach County Open GIS
 Portal, City of Boynton Beach
 Date: 12/5/2025



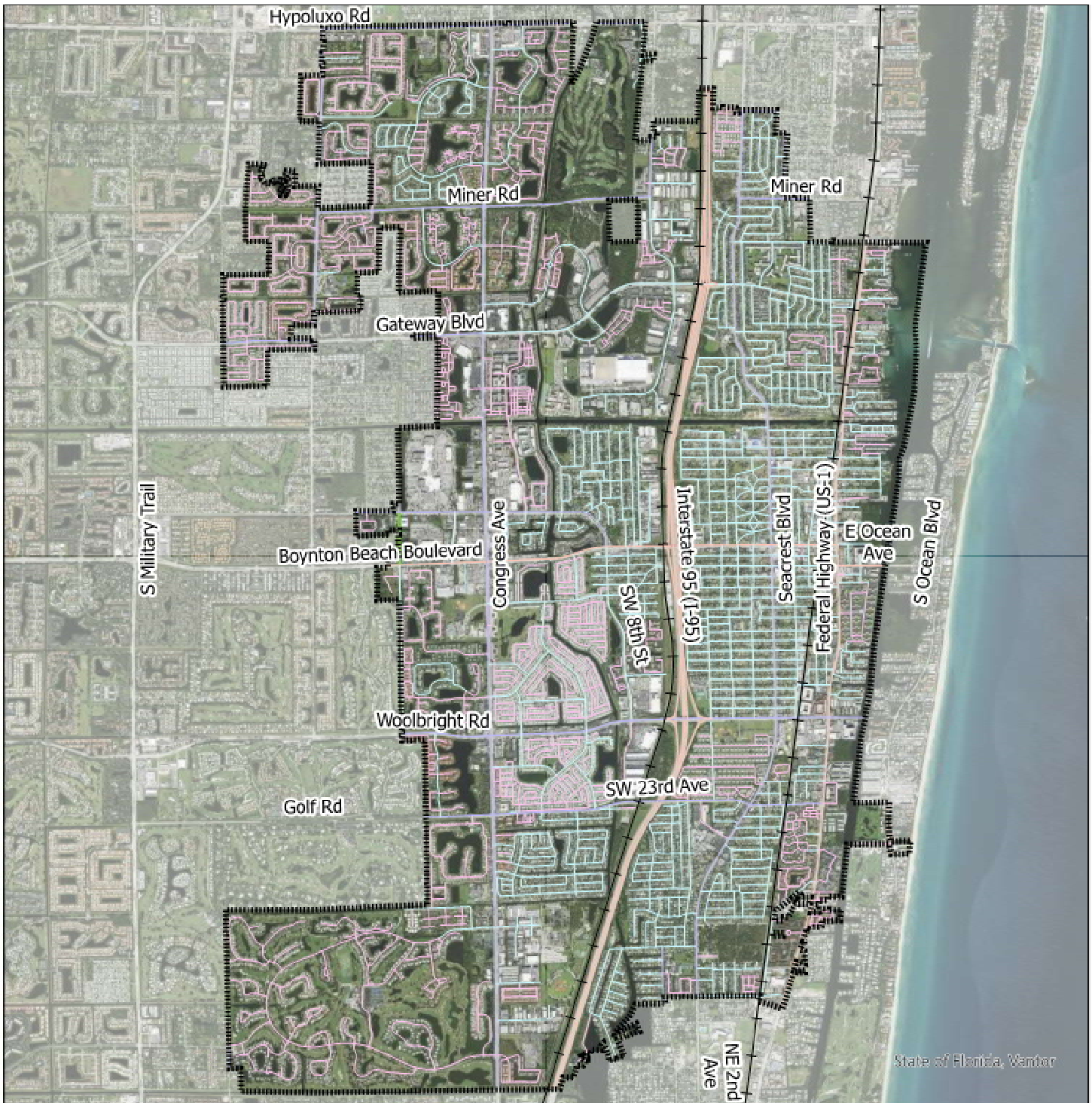
MS.10 - NUMBER OF LANES

LEGEND

 Boynton Beach Boundary	 3
 Railroad	 4
Number of Lanes	 5
 1	 6
 2	 7





State of Florida, Palm Beach County Open GIS
 Portal, City of Boynton Beach
 Date: 12/5/2025







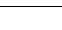
State of Florida, Vendor

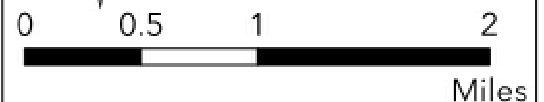
MS.11 - THOROUGHFARE MAINTENANCE RESPONSIBILITY

LEGEND

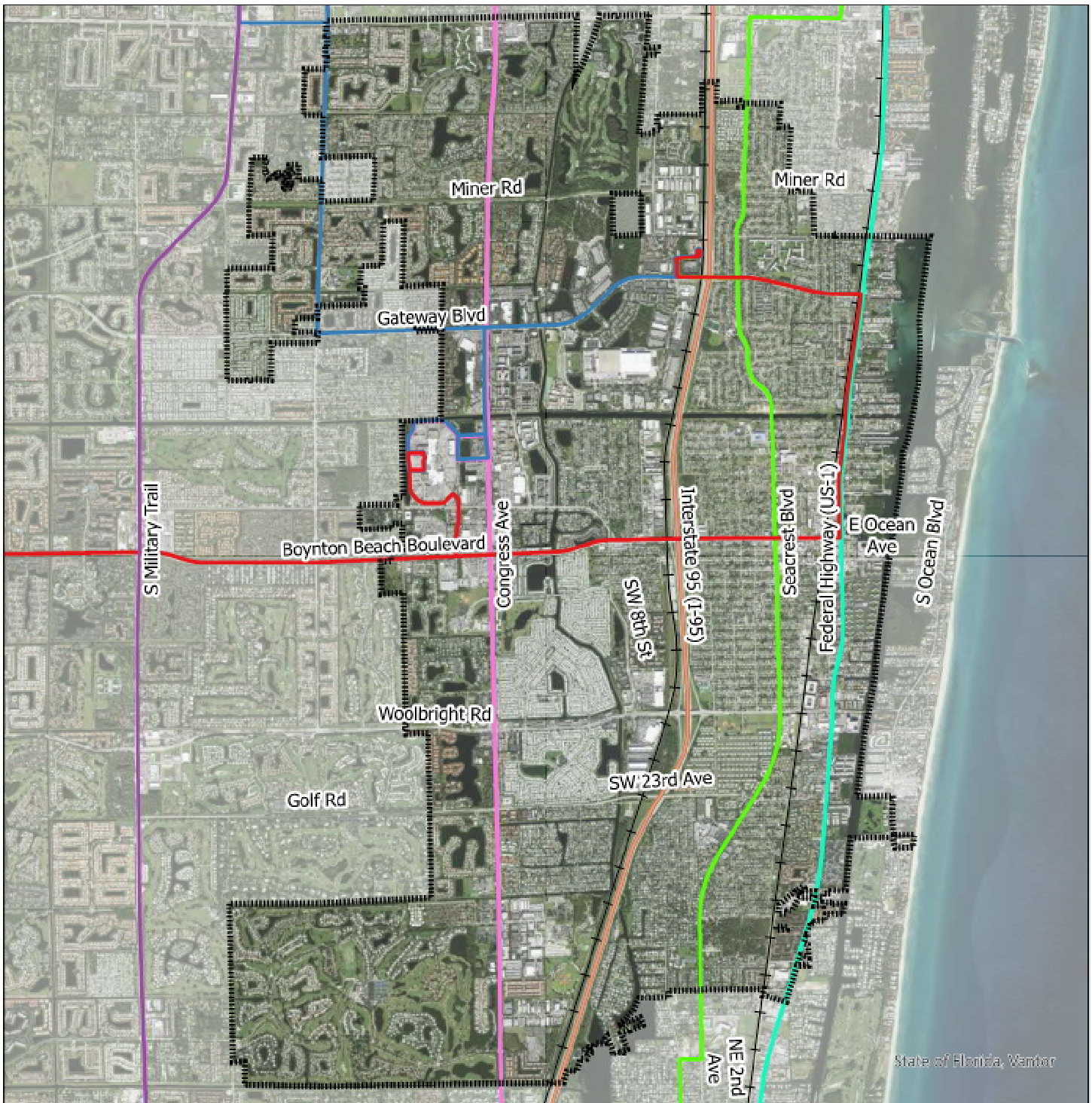
-  Boynton Beach Boundary
-  Railroad

Maintenance Responsibility

-  Florida Department of Transportation (FDOT)
-  County
-  City
-  Private
-  Courtesy



State of Florida, Palm Beach County Open GIS
 Portal, City of Boynton Beach
 Date: 12/5/2025



MS.12 - BUS ROUTES

LEGEND

 Boynton Beach Boundary

 I-95

 Railroad


Bus Route

 BYB X-TOWN via BOYNTON BEACH

 BYB X-TOWN via LAWRENCE

 LNT - DLB via SEACREST

 PBG - BCR via MILITARY

 PBG - BCR via US-1

 WPB - BCR via CONGRESS

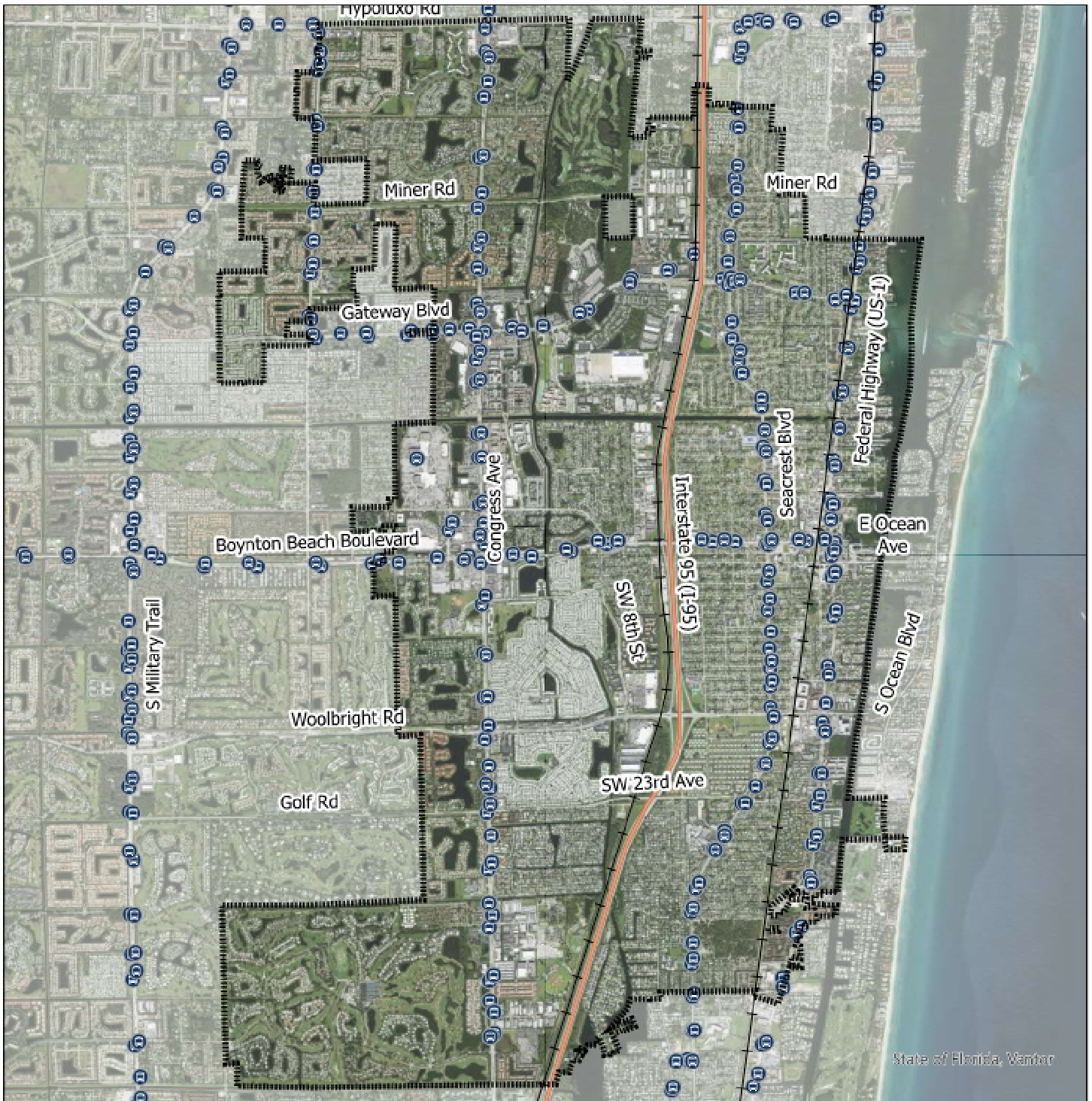


0 0.5 1 2



Miles

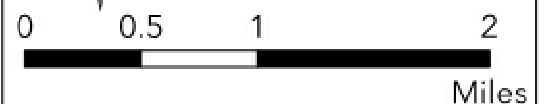
State of Florida, Palm Beach County Open GIS
Portal, City of Boynton Beach
Date: 12/5/2025



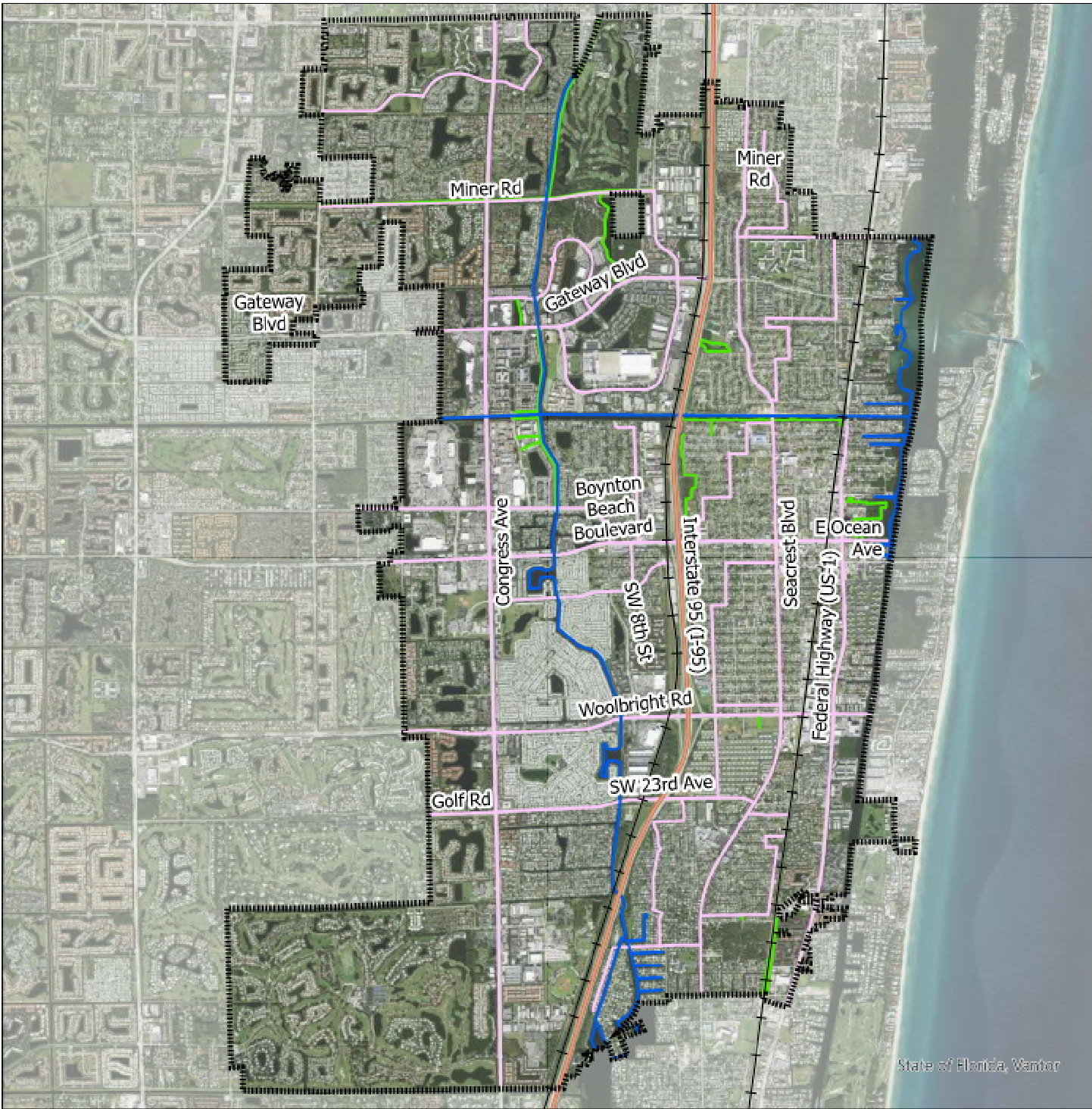
MS.13 - BUS STOPS

LEGEND

-  Boynton Beach Boundary
-  I-95
-  Railroad
-  Bus_Stops
-  BoyntonBeachCorridors



State of Florida, Palm Beach County Open GIS
 Portal, City of Boynton Beach
 Date: 12/5/2025



MS.14 - BIKEWAYS, BLUEWAYS, GREENWAYS

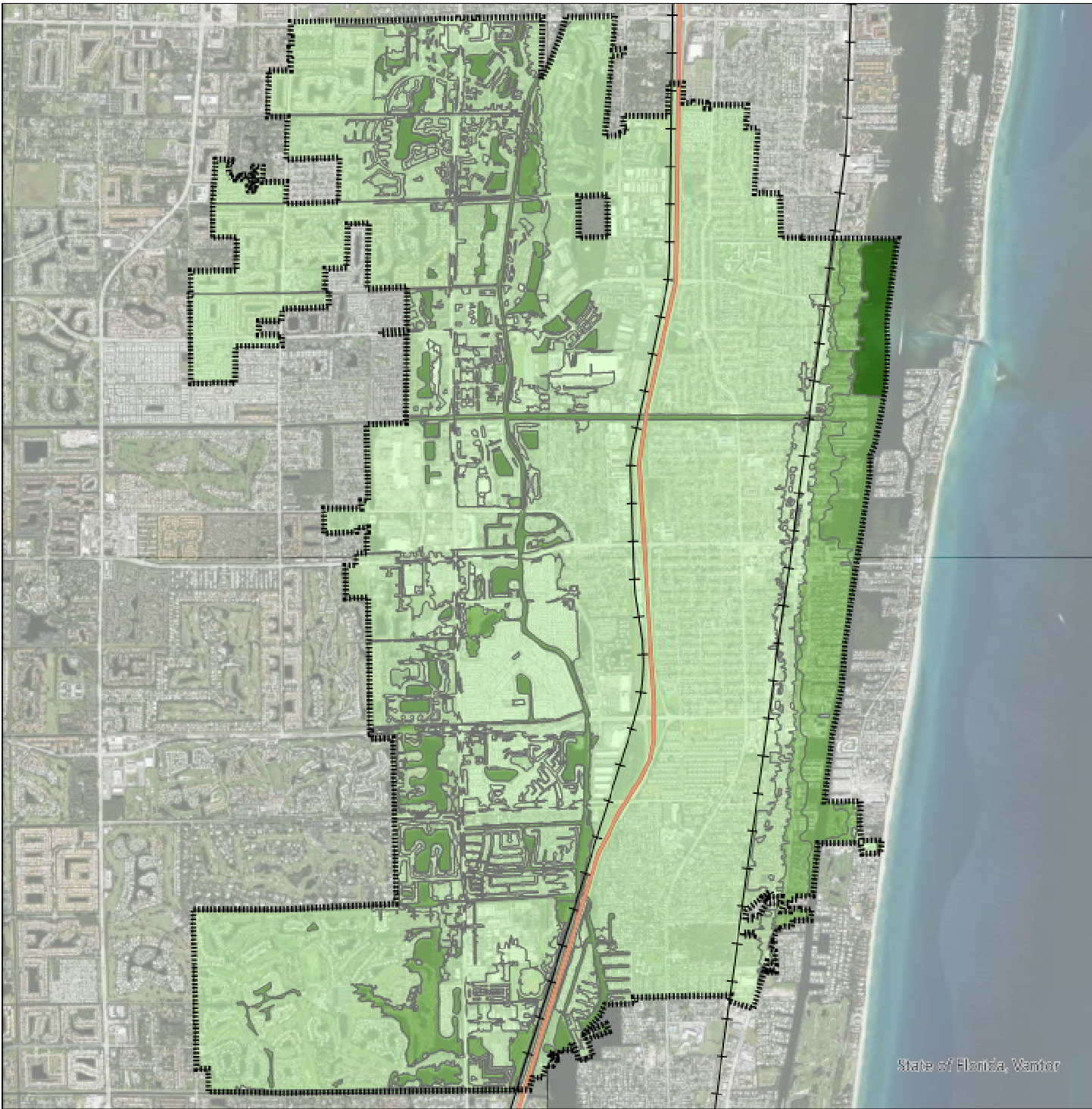
LEGEND

-  Boynton Beach Boundary
-  Blueways
-  Bikeways
-  I-95
-  Greenways
-  Railroad



Miles

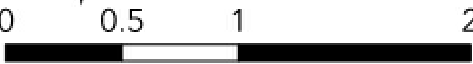
State of Florida, Palm Beach County Open GIS
 Portal, City of Boynton Beach
 Date: 12/5/2025



MS.15 - FLOOD ZONES

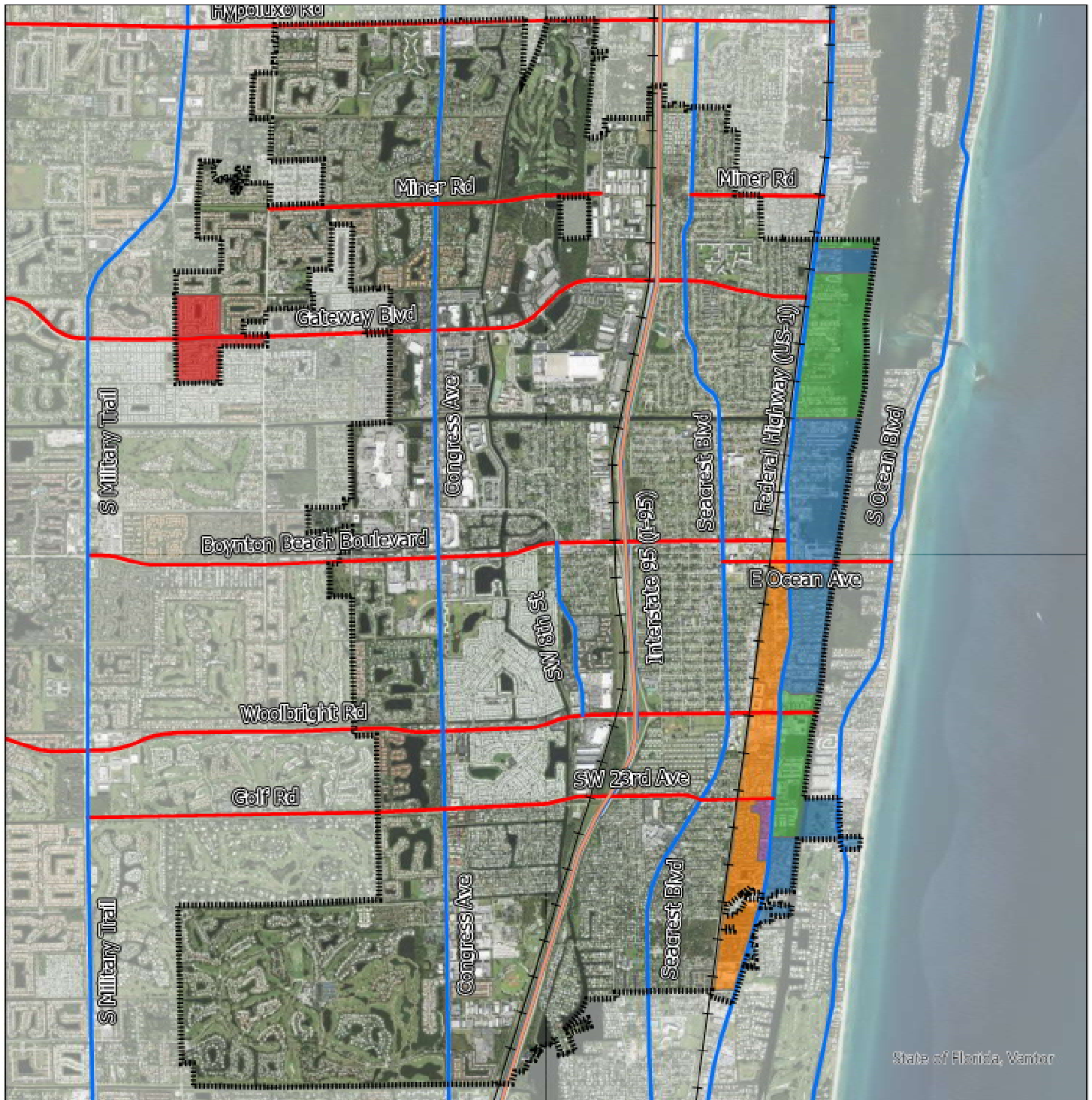
LEGEND

- | | |
|--|--|
|  Boynton Beach Boundary | Flood Zone |
|  I-95 |  X |
|  Railroad |  AE |
| |  VE |



Miles

State of Florida, Palm Beach County Open GIS
 Portal, City of Boynton Beach
 Date: 12/5/2025



MS.16 - EVACUATION ROUTES AND ZONES

Legend

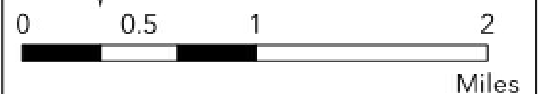
- Boynton Beach Boundary
- I-95
- Railroad

Evacuation Zone

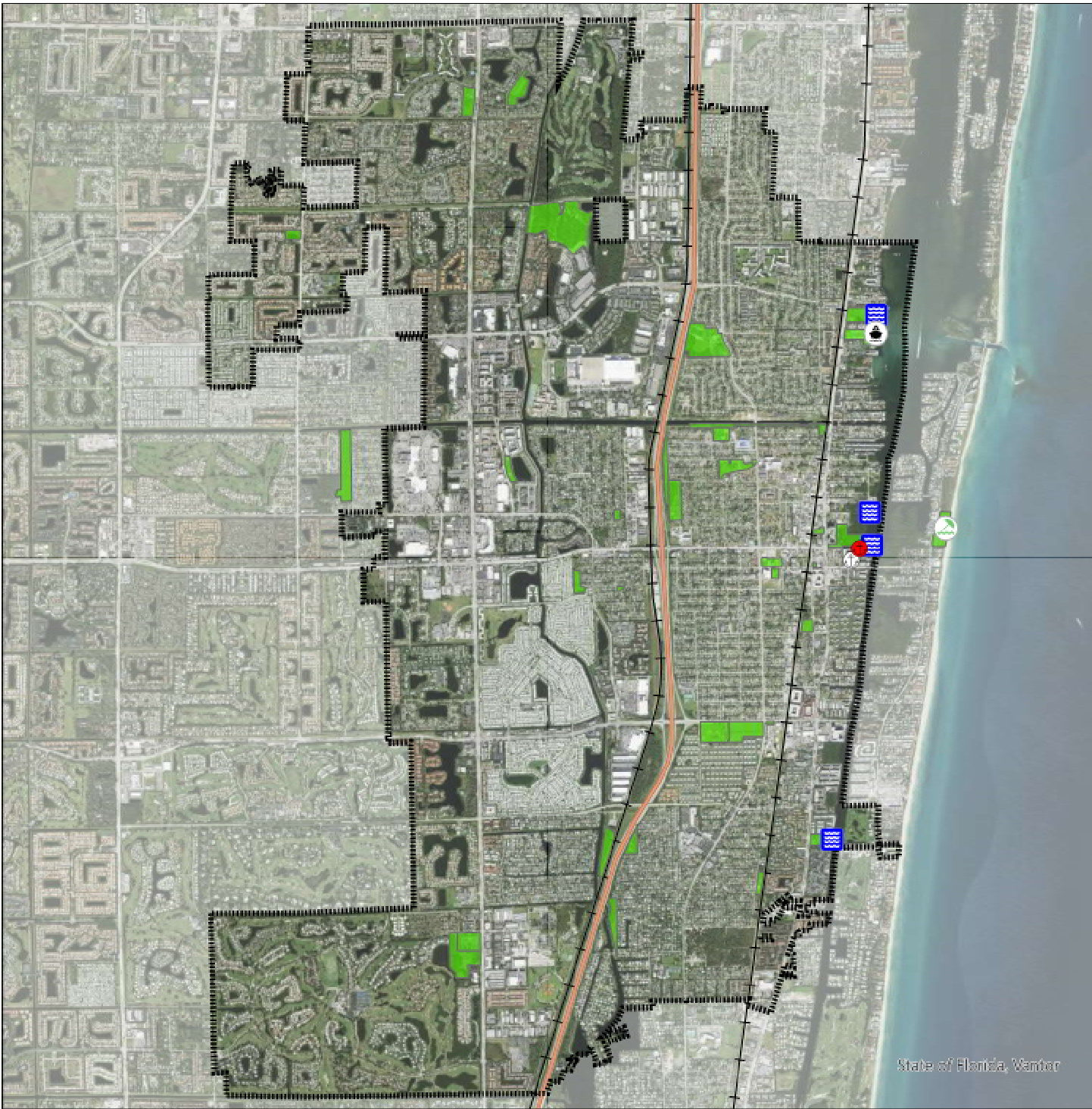
- ZONE A
- ZONE B
- ZONE C
- ZONE D
- ZONE E

Evacuation Routes

- East - West
- North - South



State of Florida, Palm Beach County Open GIS
 Portal, City of Boynton Beach
 Date: 12/5/2025







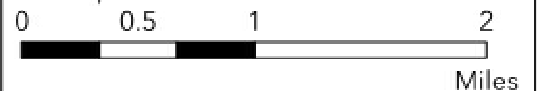
MS.17 - FACILITIES PROVIDING WATER ACCESS

Legend

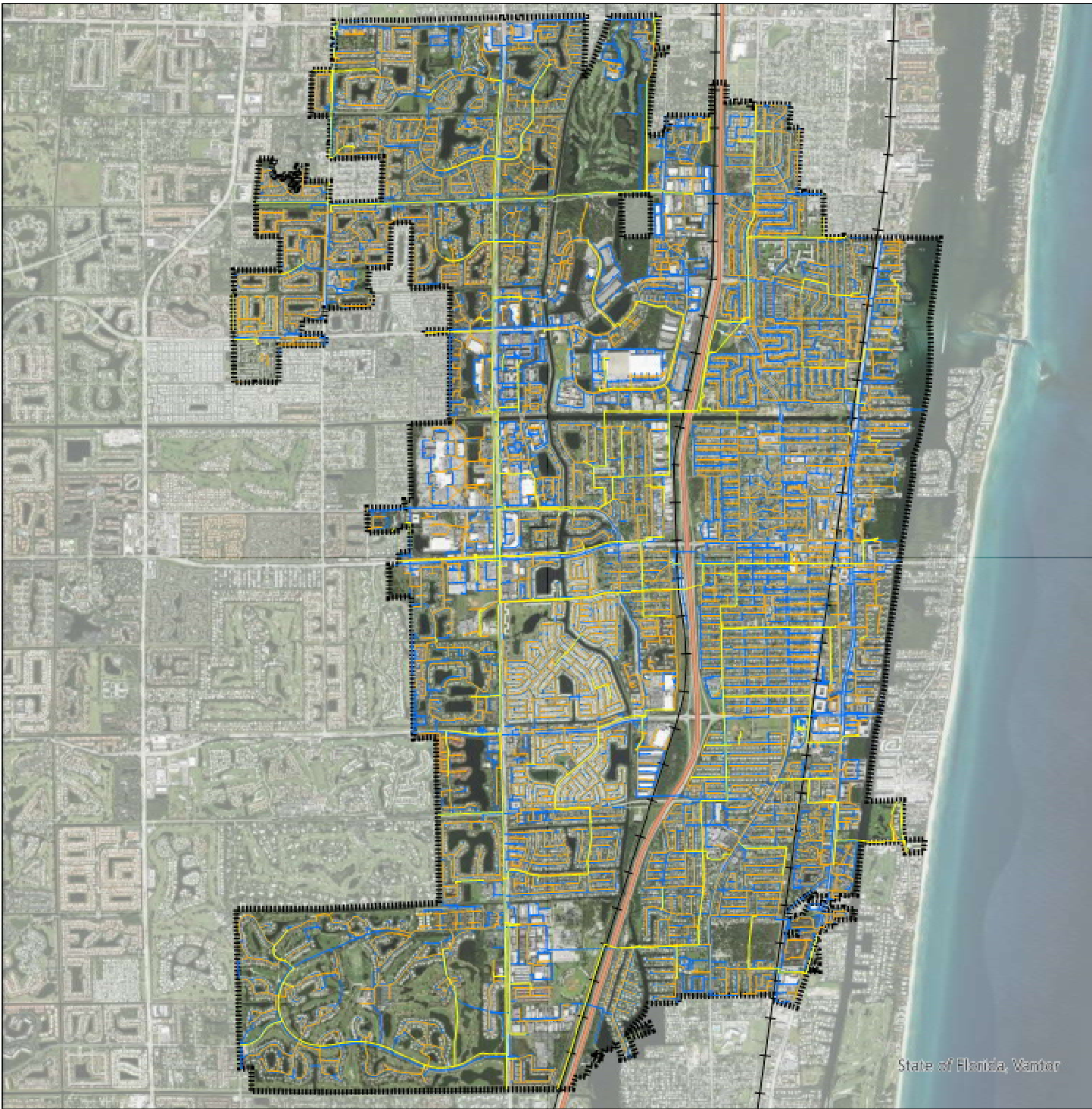
-  Boynton Beach Boundary
-  I-95
-  Railroad
-  Recreation Facilities

Marinas and Access Points

-  Beach Access
-  Boat Ramp
-  Intracoastal Waterway Access
-  Private Marina
-  Public Marina





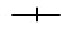


State of Florida, Palm Beach County Open GIS
 Portal, City of Boynton Beach
 Date: 12/5/2025



MS.18 - WATER AND SEWER SYSTEMS

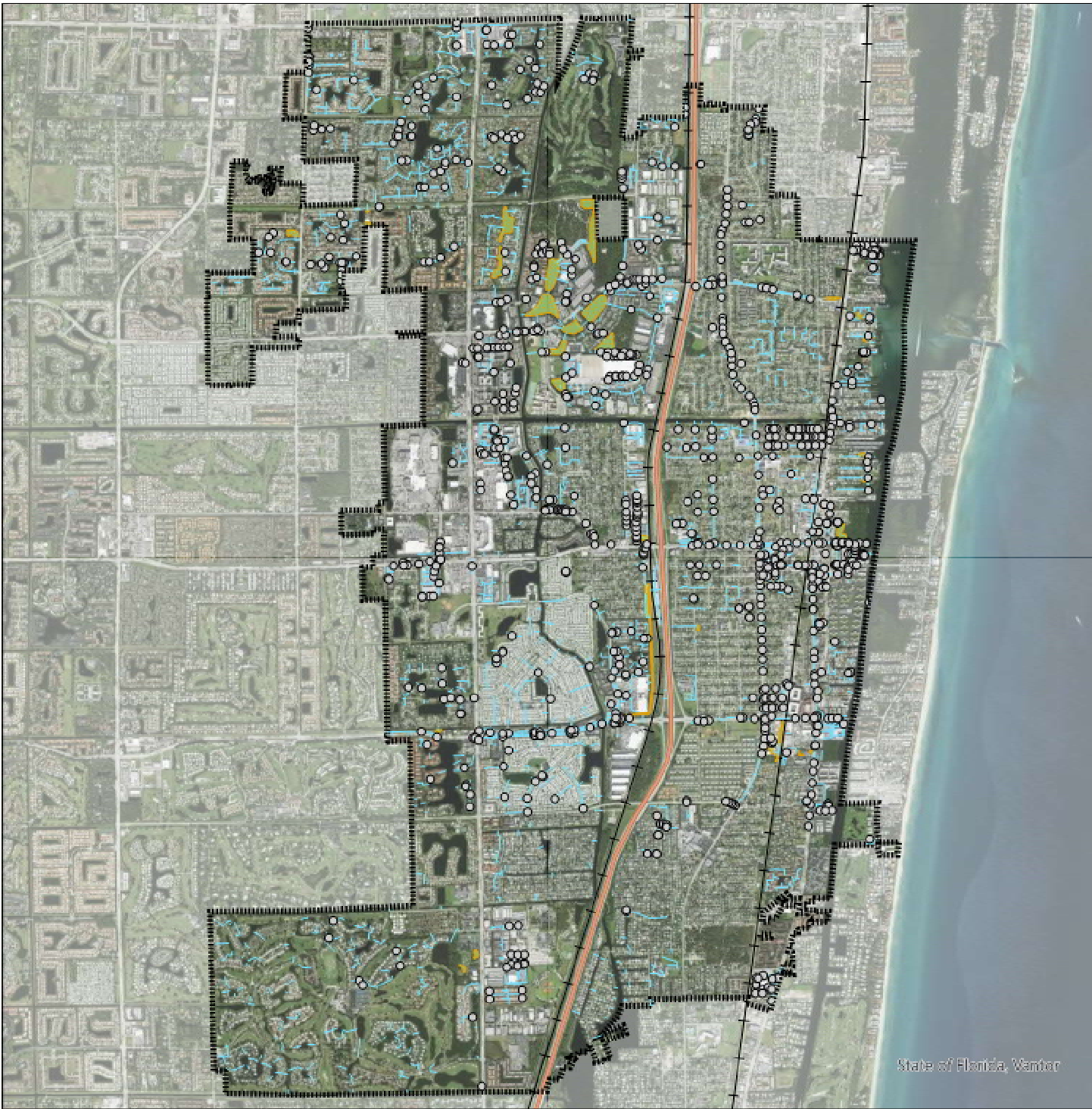
Legend

-  Boynton Beach Boundary
-  Water Main
-  I-95
-  Sewer Gravity Main
-  Railroad
-  Sewer Force Main





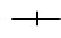



Miles

State of Florida, Palm Beach County Open GIS
 Portal, City of Boynton Beach
 Date: 12/5/2025



MS.19 - STORMWATER SYSTEMS

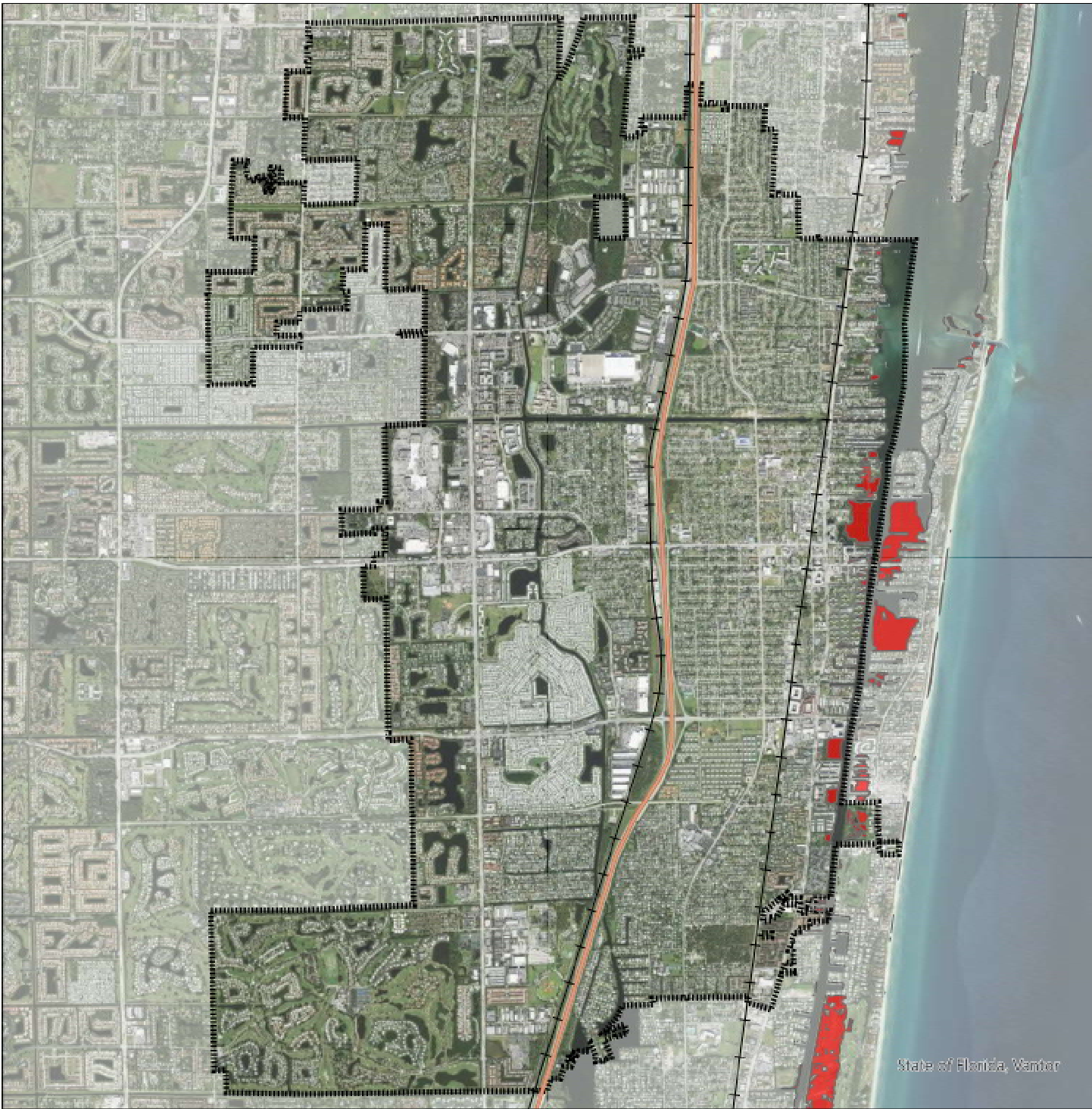
Legend

-  Boynton Beach Boundary
-  I-95
-  Railroad
-  Stormwater Lines
-  Stormwater Manholes
-  Stormwater Retention Areas




Miles


State of Florida, Palm Beach County Open GIS
 Portal, City of Boynton Beach
 Date: 12/5/2025

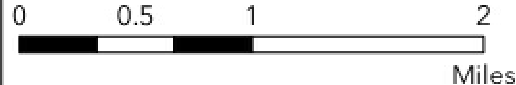


MS.20 - COASTAL HIGH HAZARD AREAS (CATEGORY 1)

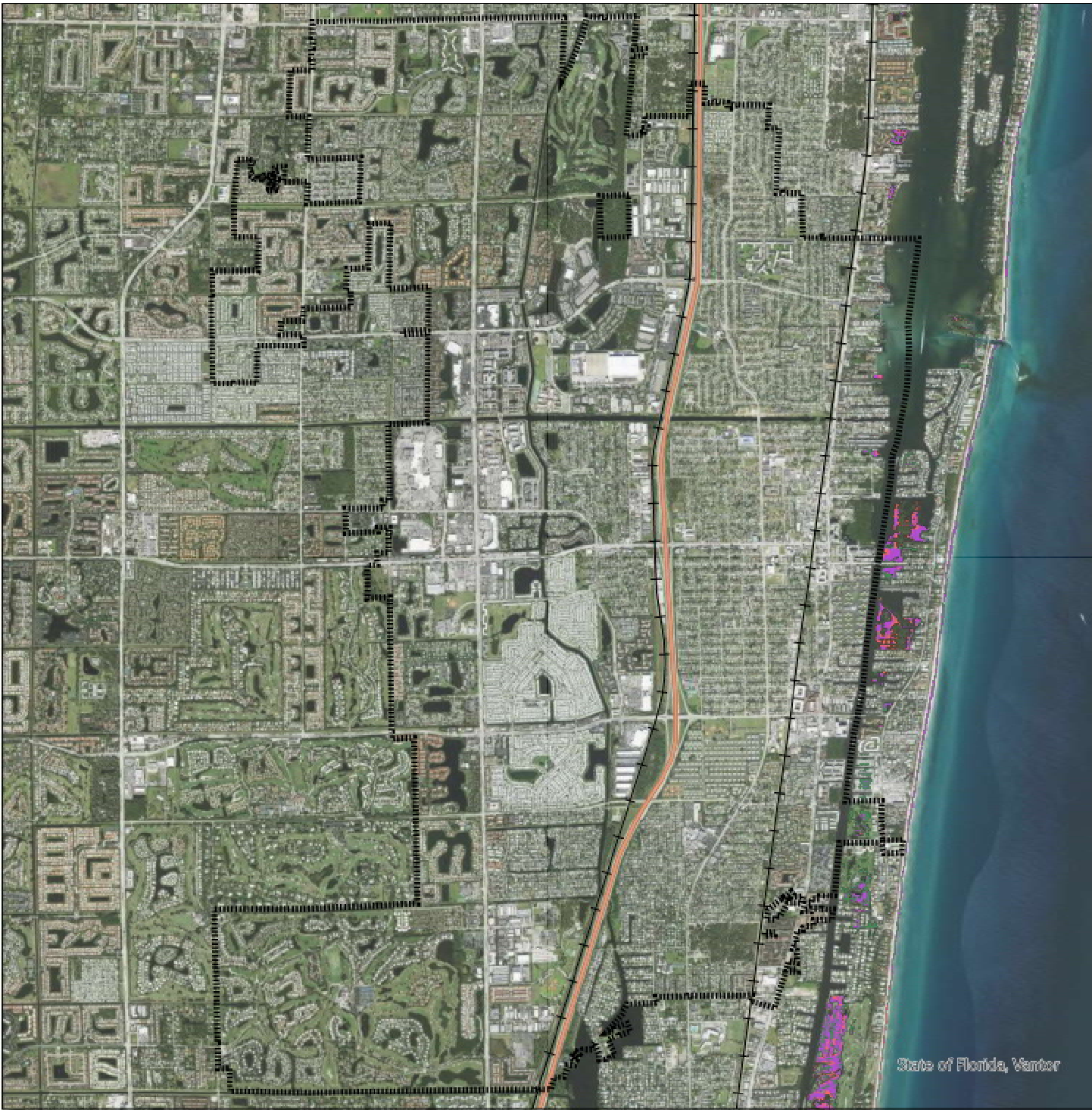
LEGEND

-  I-95
-  Railroad
-  Boynton Beach Boundary

 Coastal High Hazard Area (Category 1)



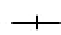





State of Florida, Palm Beach County Open GIS
 Portal, City of Boynton Beach
 Date: 12/5/2025



MS.21 - STORM SURGE (CATEGORY 1)

Legend

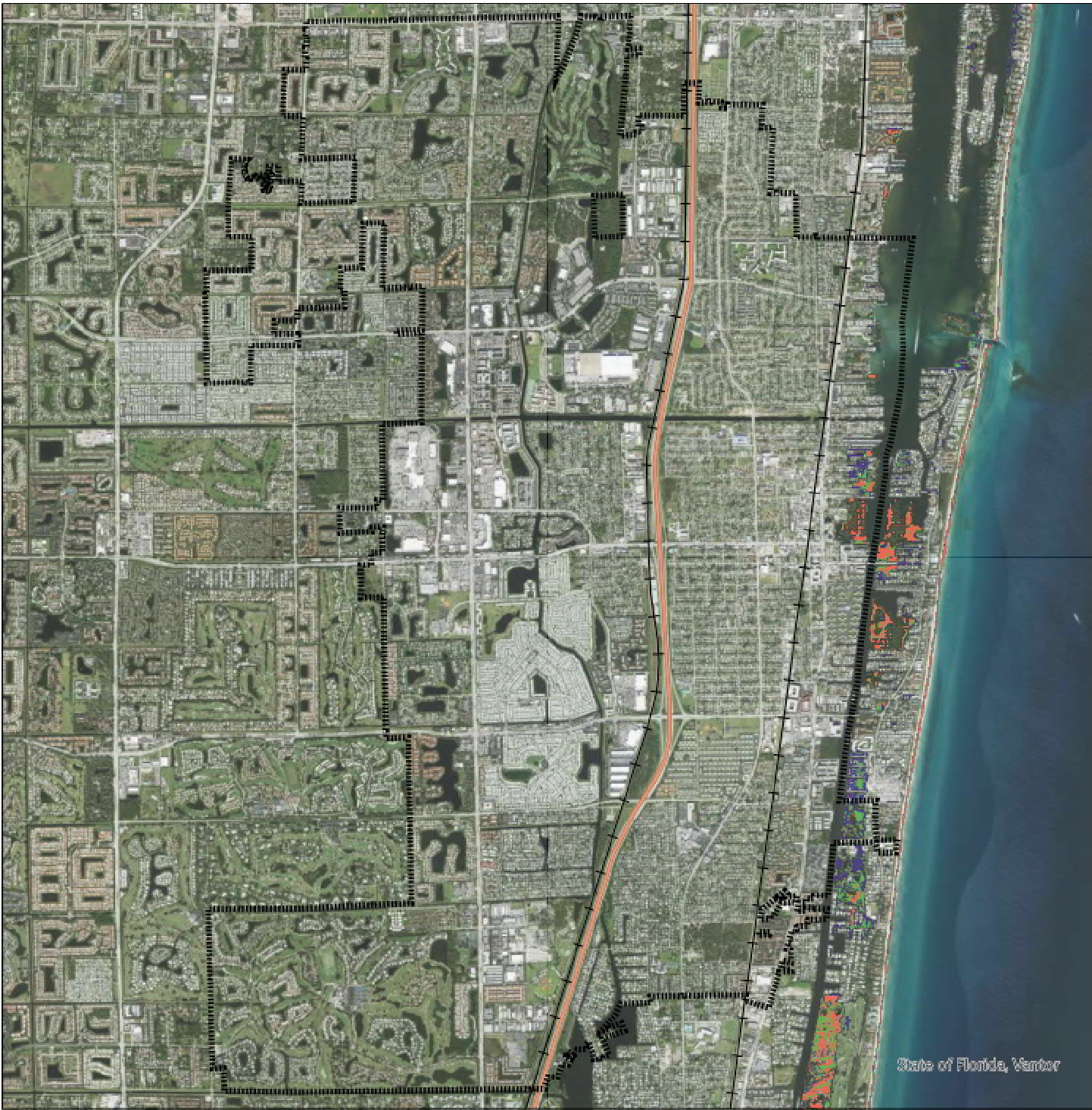
-  Boynton Beach Boundary
-  I-95
-  Railroad

- ### Water Level
-  00 to 01 feet above ground
 -  01 to 02 feet above ground
 -  02 to 03 feet above ground





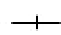
Miles





State of Florida, Palm Beach County Open GIS Portal, City of Boynton Beach
 Date: 12/5/2025



MS.22 - STORM SURGE (CATEGORY 2)

Legend

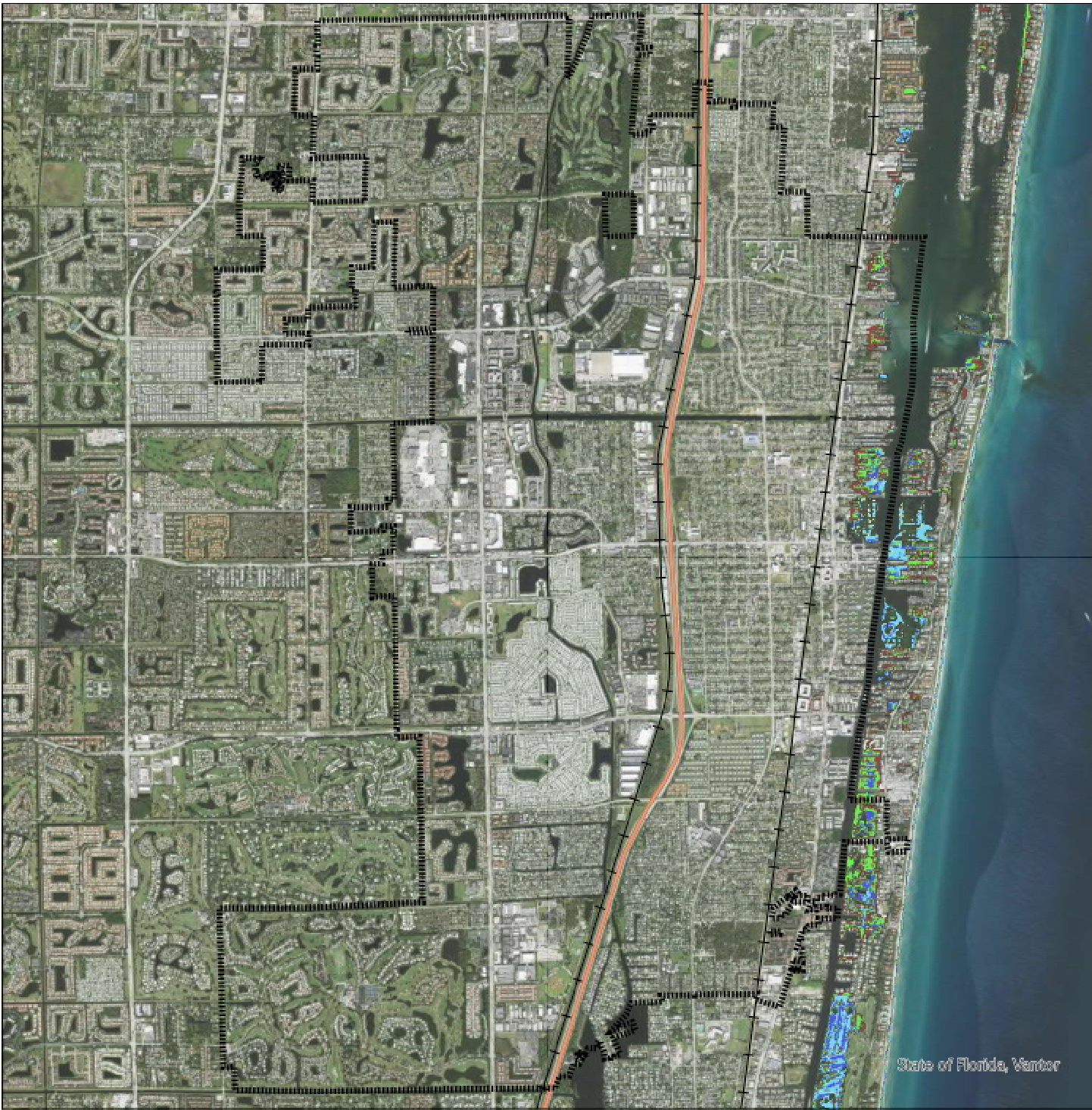
-  Boynton Beach Boundary
-  I-95
-  Railroad

- ### Water Level
-  00 to 01 foot above ground
 -  01 to 02 feet above ground
 -  02 to 03 feet above ground
 -  03 to 04 feet above ground



Miles

State of Florida, Palm Beach County Open GIS
 Portal, City of Boynton Beach
 Date: 12/5/2025



MS.23 - STORM SURGE (CATEGORY 3)

Legend

- Boynton Beach Boundary
- I-95
- Railroad

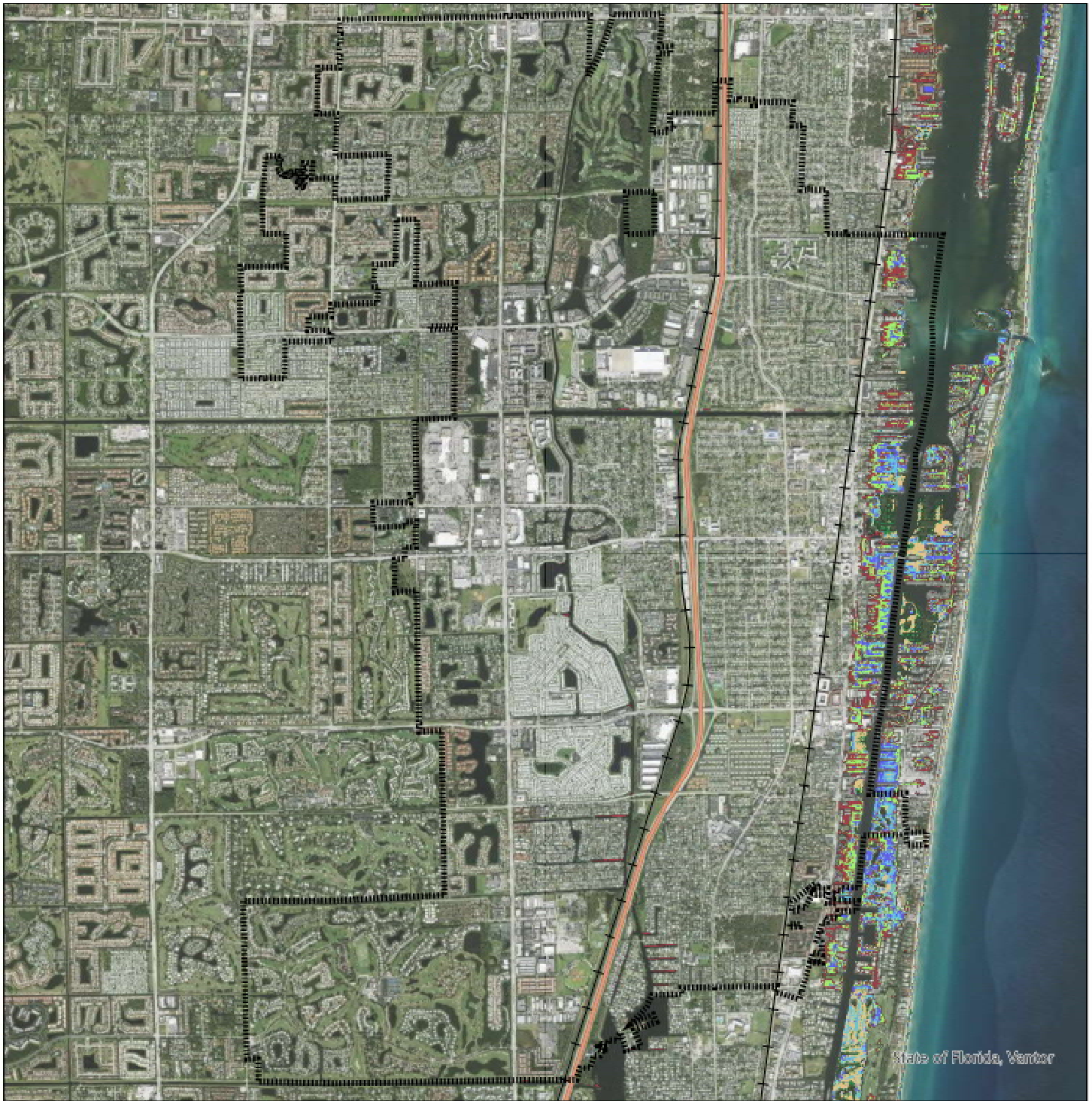
Water Level

- 00 to 01 feet above ground
- 01 to 02 feet above ground
- 02 to 03 feet above ground
- 03 to 04 feet above ground
- 04 to 05 feet above ground



Miles

State of Florida, Palm Beach County Open GIS
 Portal, City of Boynton Beach
 Date: 12/5/2025



MS.24 - STORM SURGE (CATEGORY 4)

Legend

 Boynton Beach Boundary

 I-95

 Railroad

Water Level

 00 to 01 feet above ground

 01 to 02 feet above ground

 02 to 03 feet above ground

 03 to 04 feet above ground

 04 to 05 feet above ground

 05 to 06 feet above ground

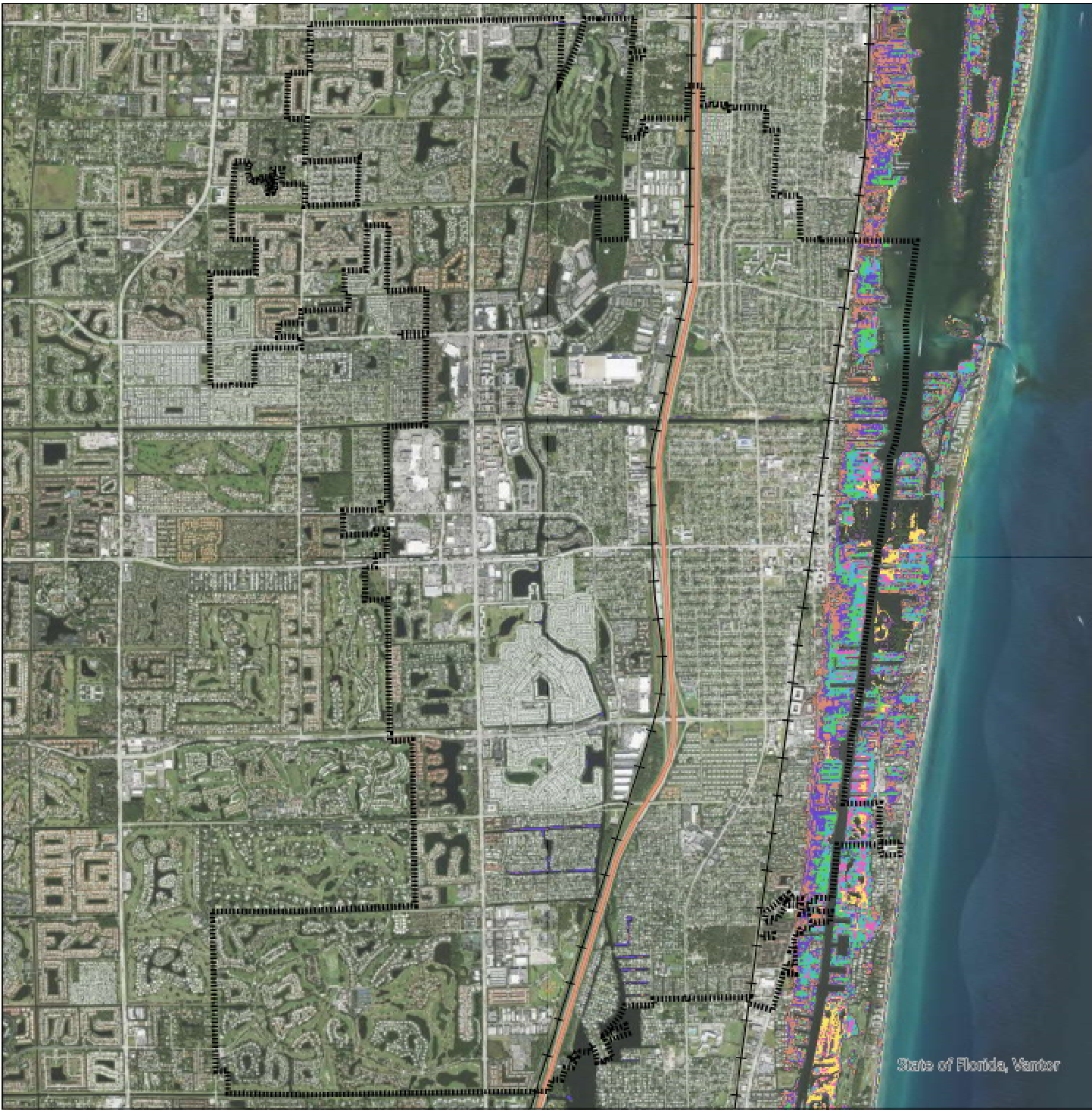


0 0.5 1 2

Miles

State of Florida, Palm Beach County Open GIS
Portal, City of Boynton Beach

Date: 12/5/2025



MS.25 - STORM SURGE (CATEGORY 5)

Legend

- Boynton Beach Boundary
- I-95
- Railroad

Water Level

- 00 to 01 feet above ground
- 01 to 02 feet above ground
- 02 to 03 feet above ground
- 03 to 04 feet above ground
- 04 to 05 feet above ground
- 05 to 06 feet above ground
- 06 to 07 feet above ground

0 0.5 1 2

Miles

State of Florida, Palm Beach County Open GIS
 Portal, City of Boynton Beach
 Date: 12/5/2025