

## IX. STANDARD DETAILS

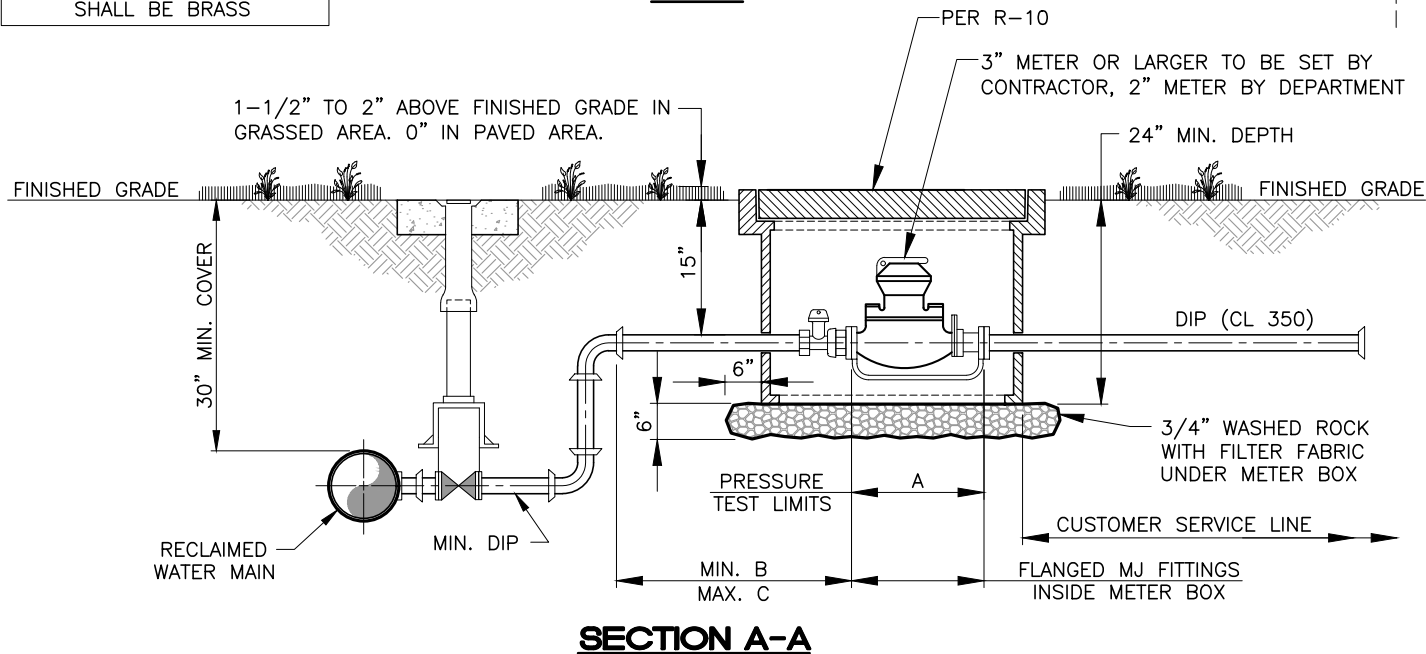
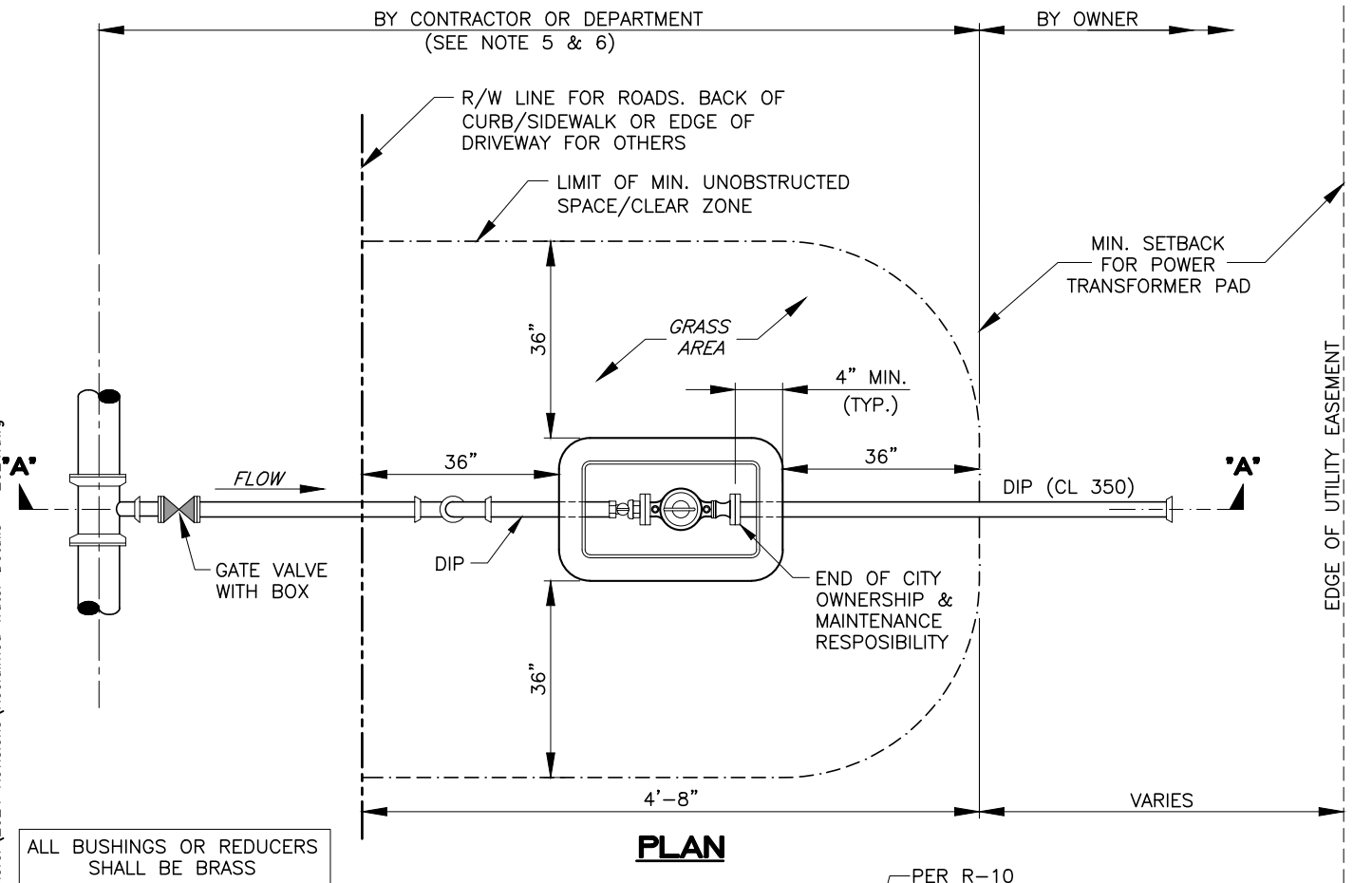
### **RECLAIMED WATER DETAILS**

#### **DRAWING INDEX**

Reclaimed Water 2, 3" and Larger Meter Service Detail .....	R-1
Reclaimed Water Main 3" and Larger Meter Service Detail.....	R-2
Typical Gate Valve Setting and Main Cut-In Detail .....	R-3
Typical Butterfly Valve Setting.....	R-4
This Sheet Left Blank Intentionally.....	R-5
Reclaimed Water Main Offset Air Release Valve and Manhole .....	R-6
Reclaimed Water Main Pig Launcher Detail.....	R-7
Reclaimed Water Standard Sign.....	R-8
Reclaimed Water Service Radio Read For Sensus ¾" & 2" Meters.....	R-9
Reclaimed Water Service Radio Read For Sensus 1-1/2" & 2".....	R-10
Reclaimed Water Main Locating Wire Detail for Non-Metallic Pipe.....	R-11
PVC Pipe Locating Wire Detail.....	R-12



\\cadd\UTIL CADD Gis\Map and Drawings from Share Drive\CBB Revised Standards in Layouts\Transfer\2024 Revisions\Reclaimed Water Details - 2024.dwg



UTILITIES  
ENGINEERING DIVISION

## BOYNTON BEACH UTILITIES DEPARTMENT CONSTRUCTION STANDARDS & DETAILS

### RECLAIMED WATER 2", 3" AND LARGER METER SERVICE DETAIL

NOT TO SCALE | EFF. DATE  
05/24

PAGE NUMBER  
**R-1**

\\cadd\UTIL CADD Gis\Map and Drawings from Share Drive\CBB Revised Standards in Layouts\Transfer\2024 Revisions\Reclaimed Water Details - 2024.dwg

### **INSTALLATION NOTES:**

1. ALL 3" OR LARGER SERVICE PIPING SHALL BE DUCTILE IRON WITH 3" GATE VALVES OR LARGER AND VALVE BOXES, OR AS SPECIFIED IN APPROVED DESIGN PLANS.
2. ALL PIPE AND FITTINGS INSIDE METER BOX TO BE 350 PSI W/CLASS 125 FLANGES, FULL BODIED. ALL HARDWARE FOR FLANGED FITTINGS (BOLTS, ETC...) TO BE 316 STAINLESS STEEL. RESTRAINER RODS MAY BE REQUIRED.
3. CONTRACTOR SHALL CONSTRUCT SERVICE FOR THE METER TO BE INSTALLED "TRUE" AND "PLUMB" AND TO ALLOW METER READING THROUGH THE METER READING LID.
4. THE ENTIRE ASSEMBLY (WITHOUT METER) SHALL BE PRESSURE TESTED AS REQUIRED.
5. RECLAIMED WATER METER 3" OR LARGER SHALL BE FURNISHED AND INSTALLED BY THE CONTRACTOR.
6. METER SERVICE WILL NOT BE INSTALLED UNTIL:
  - A. FORM BOARDS FOR DRIVEWAY AND/OR SIDEWALK ARE IN PLACE OR DRIVEWAY OR SIDEWAY IS IN PLACE OR "FINISHED GRADE" STAKE IS SET ADJACENT TO PROPOSED METER BOX LOCATION.
  - B. "MINIMUM UNOBSTRUCTED SPACE" (AS SHOWN) IS PROVIDED.
7. SENSUS METERS SHALL HAVE A TOUCH-READ REGISTER.
8. PAINT DIRECTIONAL ARROWS (BLACK) ON PIPING.
9. ALL PIPING AND FITTINGS SHALL BE PAINTED PURPLE (PANTONE 522C).
10. APPROVED METER BOX TO BE PERMANENTLY INFUSED PURPLE COLOR WITH LID MARKED "RECLAIMED WATER - DO NOT DRINK" AND PAINTED PURPLE.
11. ALL FITTINGS OUTSIDE OF METER VAULT SHALL BE MECHANICAL JOINT OR FLANGED WITH MEGALUGS OR EQUAL. ALL PIPING SHALL BE RESTRAINED.
12. PIPING & VALVE TO BE IDENTIFIED AS "RECLAIMED WATER SYSTEM" COMPONENTS.
13. METER SHALL NOT BE PLACED IN SIDEWALK OR DRIVEWAY AREAS.
14. ALL HARDWARE FOR FLANGED CONNECTIONS (BOLTS etc...) TO BE 316 STAINLESS STEEL.
15. CHECK VALVE TO BE FREE OF OBSTRUCTION FOR PROPER OPERATION.
16. ALL BOXES AND COVERS SHALL BE POLYMER CONCRETE AND FIBERGLASS COMPOSITE UNLESS OTHERWISE APPROVED BY THE DEPARTMENT. THEY SHALL MEET ASTM D-570 STANDARDS FOR WATER ABSORPTION, GAINING NO MORE THAN 0.5% IN WEIGHT AFTER EXPOSURE TO MOISTURE AS ESTABLISHED BY THIS STANDARD.
17. ALL BOXES AND COVERS SHALL MEET THE REQUIREMENTS FOR TRAFFIC H-20 LOADING AS ESTABLISHED BY AASHTO, THE REQUIREMENTS OF ASTM C-857, SEC. A-8, AND A COMPRESSION STRENGTH OF AT LEAST 11,000 PSI.
18. ALL BOXES AND COVERS SHALL BE DESIGNED TO FIT AND INTERCHANGE WITH STANDARD CONCRETE BOXES AND COVERS. STANDARD COLOR TO BE CONCRETE GRAY FOR BOX. COVERS SHALL BE PURPLE (PANTONE 522C).
19. ALL COVERS SHALL BE CONSTRUCTED WITH A 2 INCH HOLE FOR A TOUCHREAD DEVICE AND ITS PERTINENT HARDWARE.
20. ALL BOXES AND COVERS SHALL BE AVAILABLE BOLTED DOWN WITH ALL HARDWARE BEING 316 STAINLESS STEEL INCLUDING ANY REPLACEABLE PARTS.



UTILITIES  
ENGINEERING DIVISION

#### BOYNTON BEACH UTILITIES DEPARTMENT CONSTRUCTION STANDARDS & DETAILS

### RECLAIMED WATER 3" AND LARGER METER SERVICE DETAIL

NOT TO SCALE    EFF. DATE  
05/24

PAGE NUMBER  
**R-2**

1. MANUFACTURER'S NAME  
2. NO. OF TURNS  
3. SIZE & CLASS  
4. SERIAL NO. -----

POURED IN PLACE  
CONCRETE COLLAR  
(3000 PSI)

COVER TO BE MARKED  
"RECLAIMED WATER"

FIBER MESH

- POUR CONCRETE TO GRADE IN SODDED AREAS.

TOP OF PAVEMENT-

C.I. ADJUSTABLE VALVE BOX-  
(INSIDE SCREW TYPE). RISER  
SHALL BE C-900 PVC

-OPERATING NUT

FULL RANGE EMS MARKER  
(SEE NOTE 7)

- APPROVED MECHANICAL JOINT VALVE (MEGALUGS OR APPROVED EQUAL REQUIRED FOR IN-LINE VALVES LARGER THAN 12" AND ALL BRANCH VALVES.)

OPTIONAL—  
C-900 RISE

## CUTTING-IN SLEEVE

- CONCRETE BLOCKING  
(OPTIONAL—DEPENDING ON  
TRENCH BEDDING CONDITIONS)

1. CONCRETE COLLAR IS NOT REQUIRED IN PAVED AREAS IF PAVEMENT SURFACE IS FINISHED PRIOR TO CONDITIONAL FINAL INSPECTION.
2. WHEN OPERATING NUT IS DEEPER THAN 36" AN EXTENSION WILL BE REQUIRED TO BRING OPERATING NUT 24"—30" BELOW FINISHED GRADE. EXTENSION BOLTS & NUTS ARE TO BE 316 STAINLESS STEEL. A HIGH STRENGTH STEEL CENTERING PLATE, WELDED TO THE EXTENSION, IS ALSO REQUIRED.
3. VALVE BOXES SHALL BE SQUARE AND HAVE COVERS MARKED "RECLAIMED WATER".
4. A GATE VALVE INSTALLATION SHALL REQUIRE MEGALUGS OR EQUAL THROUGHOUT ASSEMBLY.
5. AT DEAD END OR WHERE MAIN LINES CHANGE DIRECTION, VALVES SHALL BE RESTRAINED USING "MEGALUGS", TIE RODS, OR OTHER APPROVED RESTRAINT BY DEPARTMENT.
6. A CUT-IN INSTALLATION SHALL REQUIRE MEGALUGS OR EQUAL THROUGHOUT ASSEMBLY.
7. FULL RANGE EMS MARKER SHALL BE USED. FULL RANGE MARKER CANNOT TOUCH PIPE.
8. COVER WILL BE DETERMINED BY 18" COVER TO TOP OF VALVE OPERATING NUT.



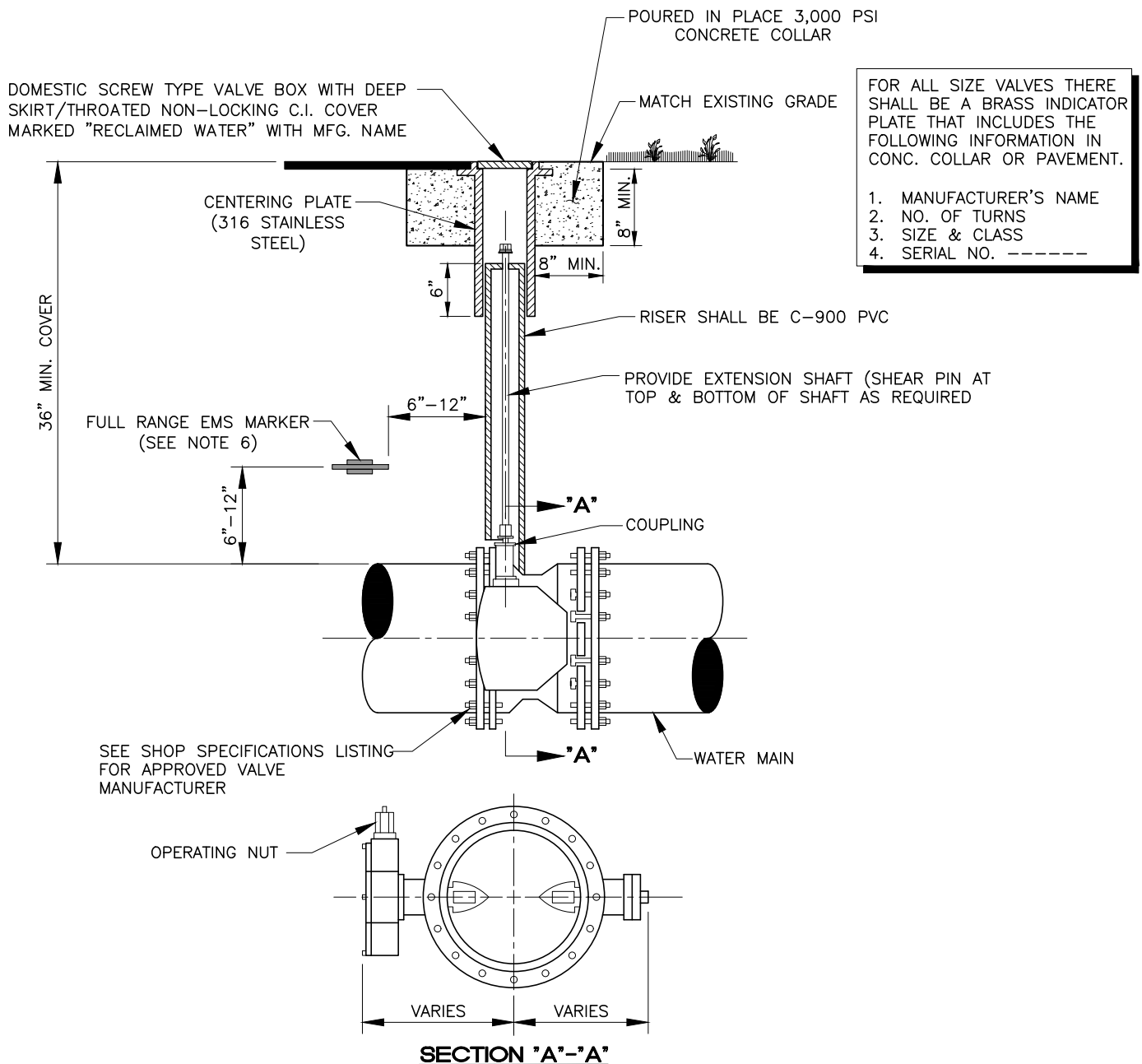
UTILITIES  
ENGINEERING DIVISION

## TYPICAL GATE VALVE SETTING AND CUT-IN DETAIL

NOT TO SCALE	EFF. DATE 05/24
-----------------	--------------------

PAGE NUMBER  
**R-3**

\\cadd\UTIL CADD Gis\Map and Drawings from Share Drive\CBB Revised Standards in Layouts\Transfer\2024 Revisions\Reclaimed Water Details - 2024.dwg



#### NOTES:

1. CONCRETE COLLAR IS NOT REQUIRED IN PAVED AREAS IF PAVEMENT SURFACE IS FINISHED PRIOR TO CONDITIONAL FINAL INSPECTION.
2. WHEN TOP OF OPERATING NUT IS DEEPER THAN 42" A HIGH STRENGTH STEEL EXTENSION WILL BE REQUIRED TO BRING OPERATING NUT 24"-30" BELOW FINISHED GRADE. EXTENSION BOLTS AND NUTS ARE TO BE STAINLESS STEEL. A HIGH STRENGTH STEEL CENTERING PLATE, WELDED TO THE EXTENSION, IS ALSO REQUIRED.
3. VALVE BOXES SHALL HAVE COVERS MARKED "RECLAIMED WATER" AND PAINTED PANTONE PURPLE.
4. A BUTTERFLY VALVE INSTALLATION SHALL REQUIRE MEGALUGS OR EQUAL THROUGHOUT ASSEMBLY.
5. AT DEAD END OR WHERE MAIN LINES CHANGE DIRECTION, VALVES SHALL BE RESTRAINED USING "MEGALUGS", TIE RODS, OR OTHER APPROVED RESTRAINT BY DEPARTMENT.
6. FULL RANGE EMS MARKER SHALL BE USED. FULL RANGE MARKER CANNOT TOUCH PIPE.



UTILITIES  
ENGINEERING DIVISION

#### BOYNTON BEACH UTILITIES DEPARTMENT CONSTRUCTION STANDARDS & DETAILS

### TYPICAL BUTTERFLY VALVE SETTING

NOT TO SCALE EFF. DATE  
05/24

PAGE NUMBER  
**R-4**

\\cadd\UTIL CADD Gis\Map and Drawings from Share Drive\CBB Revised Standards in Layouts\Transfer\2024 Revisions\Reclaimed Water Details - 2024.dwg

THIS SHEET LEFT BLANK  
INTENTIONALLY

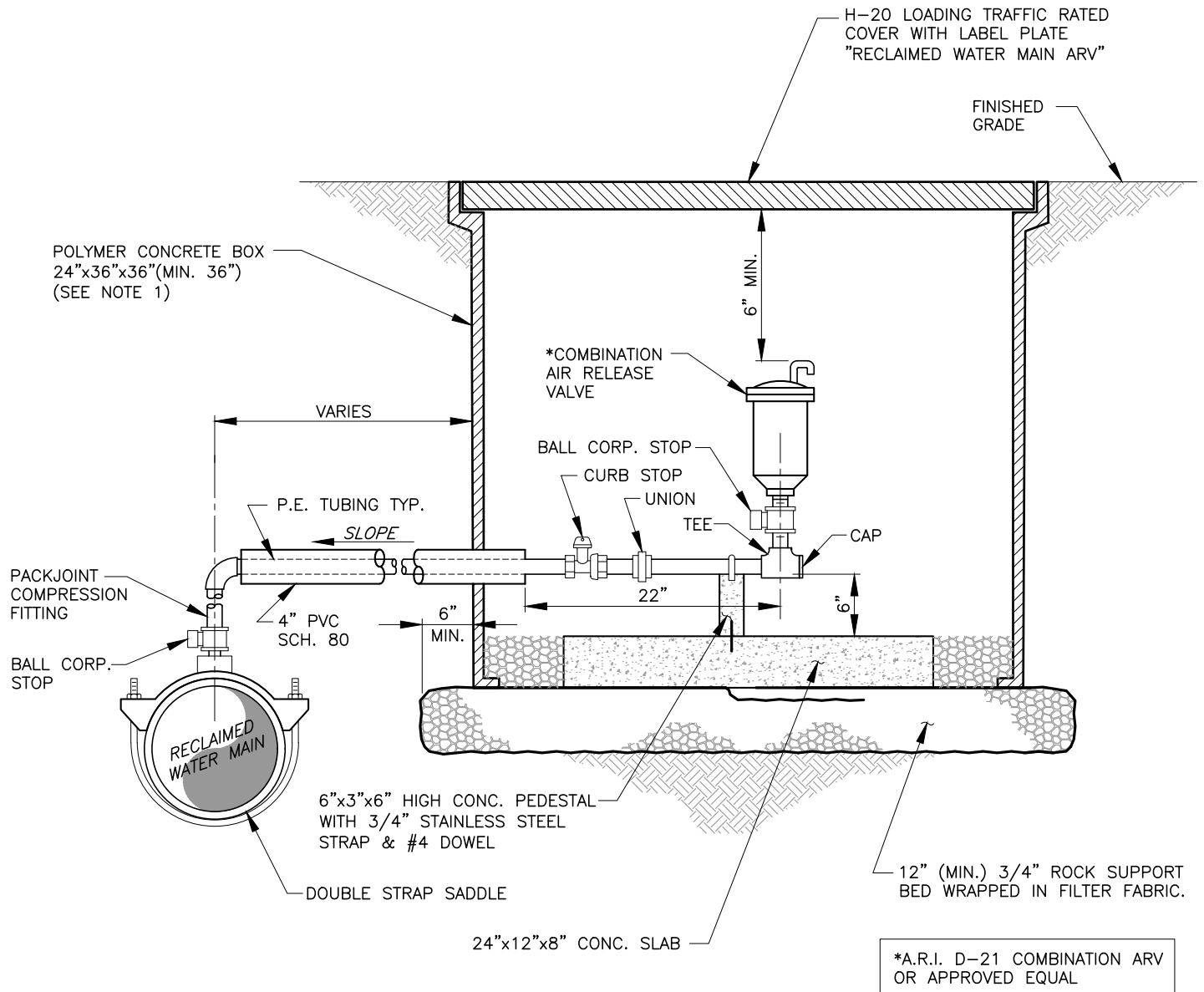


UTILITIES  
ENGINEERING DIVISION

BOYNTON BEACH UTILITIES DEPARTMENT CONSTRUCTION STANDARDS & DETAILS

NOT TO SCALE	EFF. DATE 05/24
-----------------	--------------------

PAGE NUMBER <b>R-5</b>
---------------------------



### NOTES:

1. POLYMER CONCRETE BOX 24"x36"x36"(MIN. 36") BY OLDCASTLE PRECAST, INC. OR APPROVED EQUAL (SHOP DRAWING IS REQUIRED FOR REVIEW AND APPROVAL).
2. POLYMER CONCRETE BOX AND COVER SHALL BE HEAVY DUTY TRAFFIC RATED 20K POUNDS.
3. BOXES SHALL NOT BE INSTALLED IN ROADWAYS OR DRIVEWAYS AND SHALL BE INSTALLED FLUSH WITH THE FINISH GRADE SURFACE.
4. THREADED AREAS OF BALL CORP. STOP AND OTHER FITTINGS SHALL BE SPIRAL WRAPPED WITH TWO WRAPS OF TEFLON TAPE
5. ALL OPENINGS SHALL BE SEALED WITH A WATERPROOF NON-SHRINKING GROUT.
6. ALL PIPE HOLES SHALL BE PRECAST OR CORE-DRILLED.
7. AIR RELEASE VALVE SHALL BE TYPE AND SIZE APPROPRIATE FOR SERVICE INTENDED.
8. AIR RELEASE VALVE & PIPING TO BE IDENTIFIED AS "RECLAIMED WATER ARV" STAMPED ON THE LID.
9. ALL PIPE AND FITTINGS INSIDE VAULT TO BE BRASS.
10. STANDARD DESIGN FOR ALL EASEMENT AREAS & RIGHT-OF-WAY.



UTILITIES  
ENGINEERING DIVISION

## BOYNTON BEACH UTILITIES DEPARTMENT CONSTRUCTION STANDARDS & DETAILS

# RECLAIMED MAIN OFFSET AIR RELEASE VALVE AND MANHOLE

NOT TO  
SCALE

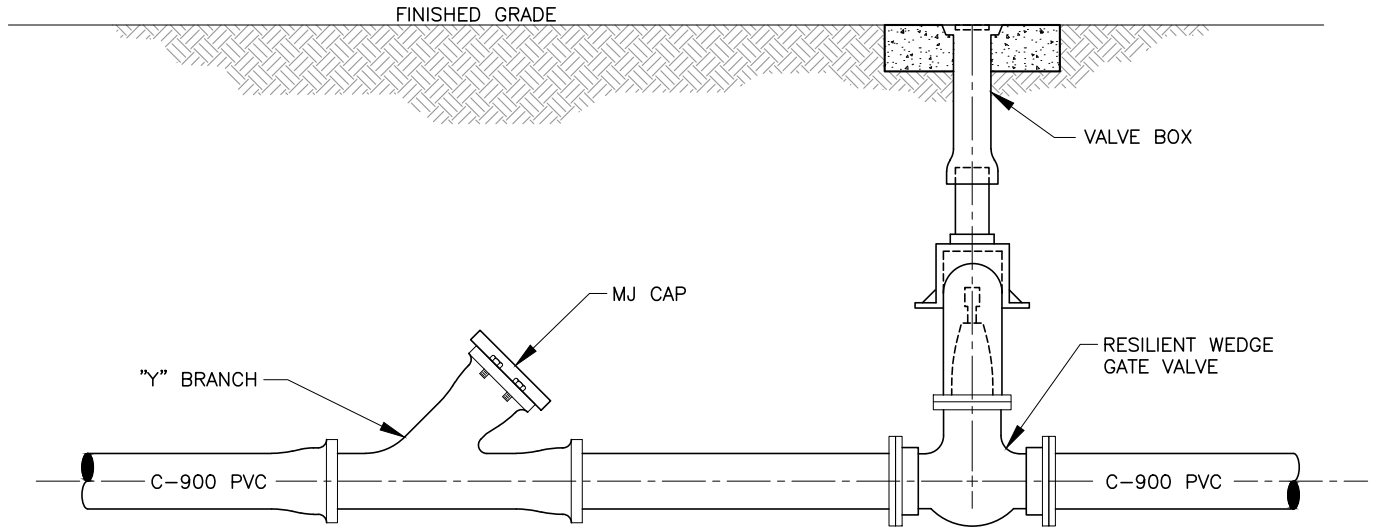
EFF. DATE  
05/24

PAGE NUMBER

R-6



\\cadd\UTIL CADD Gis\Map and Drawings from Share Drive\CBB Revised Standards in Layouts\Transfer\2024 Revisions\Reclaimed Water Details - 2024.dwg



#### **NOTES:**

1. UPON COMPLETION OF THE PIPE INSTALLATION FOR ANY SECTION, THE MAINS SHALL BE SWABBED TO REMOVE DIRT AND ANY OTHER FOREIGN MATTER BY ACHIEVING A MINIMUM VELOCITY OF 2.5 FEET PER SECOND IN THE PIPE. TEMPORARY FITTINGS, PIPE, ETC. MAY BE NEEDED TO FACILITATE FLUSHING.
2. INSTALL A WYE FITTING AND ASSOCIATED PIPING AS SHOWN TO DIRECT THE FLUSHING WATER AWAY FROM THE IMMEDIATE WORK AREA AND EXERCISE DUE CARE SO AS TO ENSURE THAT THE WATER USED IN FLUSHING DOES NOT CAUSE A NUISANCE OR INFLICT PROPERTY DAMAGE.
3. BENDS AND PIPING SHALL BE THE SAME SIZE AS THE LINE TO BE FLUSHED.
4. PRIOR TO THE ACTUAL LINE FLUSHING OPERATION, THE CONTRACTOR SHALL PROPERLY NOTIFY THE DEPARTMENT INSPECTOR OF SUCH INTENDED WATER USE.
5. NO EXISTING VALVES SHALL BE TURNED ON OR OFF, EXCEPT BY AUTHORIZED DEPARTMENT PERSONNEL.
6. FLUSHING SHALL NOT BE ACCOMPLISHED WITHOUT THE ACTUAL PRESENCE OF THE DEPARTMENT INSPECTOR.
7. AFTER THE LINE UNDER CONSTRUCTION HAS BEEN SUCCESSFULLY FLUSHED THE CONTRACTOR SHALL CAP THE WYE AND PROCEED WITH THE REMAININ CONSTRUCTION AS SPECIFIED.
8. THERE MAY BE SPECIAL REQUIREMENTS FOR FLUSHING PIPE LARGER THAN 12" DIAMETER.
9. ALL FITTINGS TO BE MECHANICAL JOINT WITH MEGALUG JOINT RESTRAINT.
10. PIPE SHALL BE PANTONE PURPLE.



UTILITIES  
ENGINEERING DIVISION

#### BOYNTON BEACH UTILITIES DEPARTMENT CONSTRUCTION STANDARDS & DETAILS

### RECLAIMED WATER MAIN PIG LAUNCHER DETAIL

NOT TO SCALE    EFF. DATE  
05/24

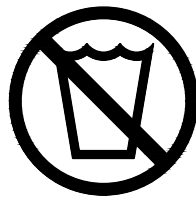
PAGE NUMBER  
**R-7**

\\cadd\UTIL CADD Gis\Map and Drawings from Share Drive\CBB Revised Standards in Layouts\Transfer\2024 Revisions\Reclaimed Water Details - 2024.dwg

# IRRIGATED WITH RECLAIMED WATER



## BOYNTON BEACH UTILITIES WATER RECLAMATION PROGRAM



**DO NOT DRINK  
NO TOMAR**



**CALL 742-6400 FOR INFORMATION**

### NOTES:

1. SIGNS SHALL BE 12"x18" WITH PURPLE AND WHITE IMPRINTS ON WHITE ALUMINUM (0.63 GAUGE), ROUNDED CORNERS (1.25" RADIUS), TWO HOLES (13/32" DIAMETER) 12" ON CENTER.
2. UP TO FIVE SIGNS AND MOUNTING HARDWARE PROVIDED BY THE CITY (AT NO COST) AND INSTALLED BY THE PROPERTY OWNER/CONTRACTOR.



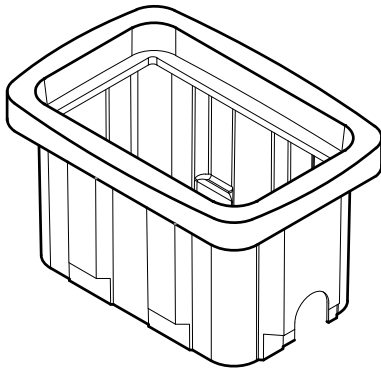
UTILITIES  
ENGINEERING DIVISION

### BOYNTON BEACH UTILITIES DEPARTMENT CONSTRUCTION STANDARDS & DETAILS

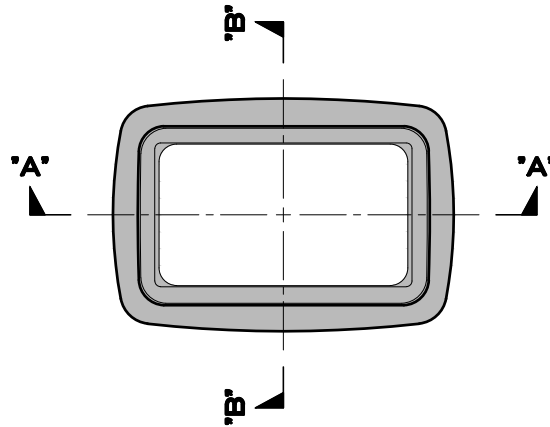
## RECLAIMED WATER STANDARD SIGN

NOT TO SCALE    EFF. DATE  
05/24

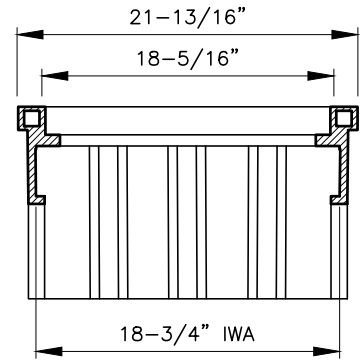
PAGE NUMBER  
**R-8**



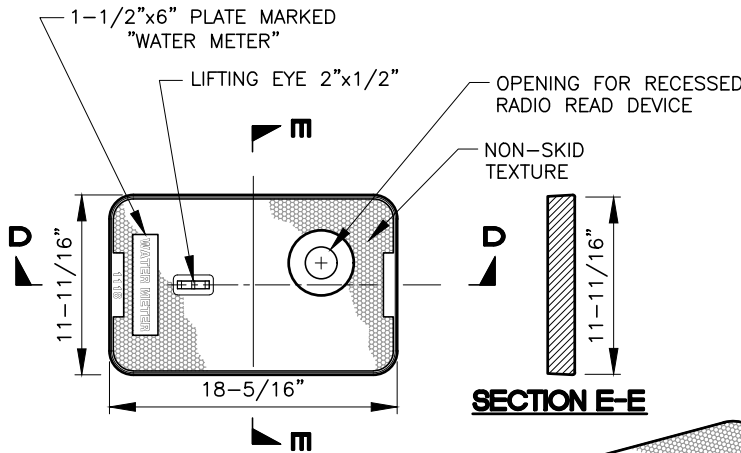
**METER BOX  
OBLIQUE VIEW**



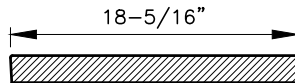
**METER BOX TOP VIEW**



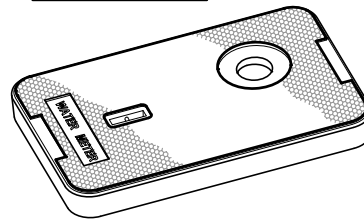
**SECTION A-A**



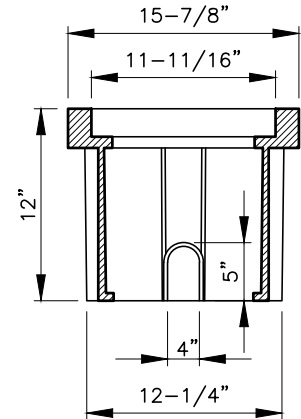
**METER BOX COVER**



**SECTION D-D**



**METER BOX COVER  
OBLIQUE VIEW**



**SECTION B-B**

**METER BOX MODEL NUMBER:**  
SIGMA RMB 111812 NSW

**METER BOX LID MODEL NUMBER:**  
OLDCASTLE FL12P-"WATER",  
AMR-2.0"x4.125"x.375"

**NOTES:**

1. METER BOXES SHALL BE INSTALLED IN A GRASS AREA OUTSIDE OF DRIVEWAYS AND SIDEWALKS.
2. ALL BOXES AND COVERS SHALL BE POLYMER CONCRETE AND FIBERGLASS COMPOSITE UNLESS OTHERWISE APPROVED BY THE DEPARTMENT. THEY SHALL MEET ASTM D-570 STANDARDS FOR WATER ABSORPTION, GAINING NO MORE THAN 0.5% IN WEIGHT AFTER EXPOSURE TO MOISTURE AS ESTABLISHED BY THIS STANDARD.
3. ALL BOXES AND COVERS SHALL MEET THE REQUIREMENTS FOR INCIDENTAL TRAFFIC H-10 LOADING AS ESTABLISHED BY AASHTO, THE REQUIREMENTS OF ASTM C-857, SEC. A-8, AND A COMPRESSION STRENGTH OF AT LEAST 11,000 PSI.
4. ALL BOXES AND COVERS SHALL BE DESIGNED TO FIT AND INTERCHANGE WITH STANDARD CONCRETE BOXES AND COVERS. STANDARD COLOR TO BE CONCRETE GRAY.
5. ALL COVERS SHALL BE CONSTRUCTED WITH A 2 INCH HOLE FOR A TOUCHREAD DEVICE AND ITS PERTINENT HARDWARE.
6. ALL BOXES AND COVERS SHALL BE AVAILABLE BOLTED DOWN WITH ALL HARDWARE BEING STAINLESS STEEL INCLUDING ANY REPLACEABLE PARTS.
7. FOR DETAILS OF A SERVICE LATERAL, METER INSTALLATION AND OTHER SERVICE REQUIREMENTS, REFER TO METER INSTALLATION DETAIL, PAGE W-15.
8. NO FLIP TOP LIDS ARE ALLOWED.
9. LIDS SHALL BE PANTONE PURPLE.



UTILITIES  
ENGINEERING DIVISION

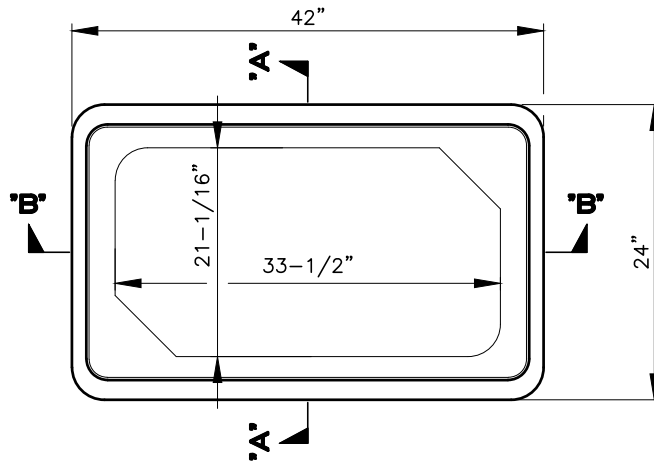
**BOYNTON BEACH UTILITIES DEPARTMENT CONSTRUCTION STANDARDS & DETAILS**

**RECLAIMED WATER SERVICE RADIO READ FOR  
SENSUS 3/4" & 1" METERS**

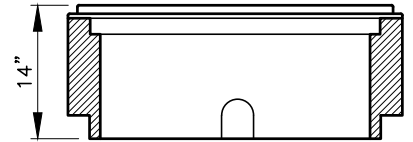
NOT TO SCALE EFF. DATE  
05/24

PAGE NUMBER  
**R-9**

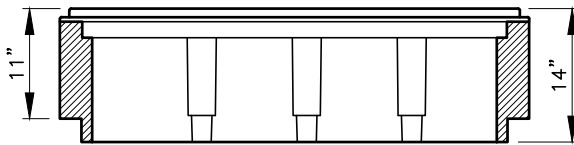
\\cadd\UTIL CADD Gis\Map and Drawings from Share Drive\CBB Revised Standards in Layouts\Transfer\2024 Revisions\Reclaimed Water Details - 2024.dwg



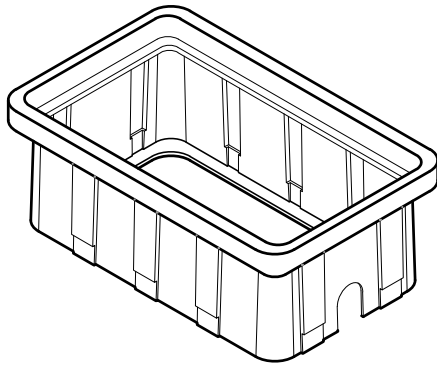
**METER BOX TOP VIEW**



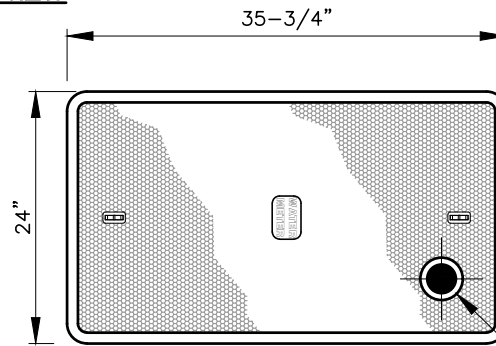
**SECTION A-A**



**SECTION B-B**

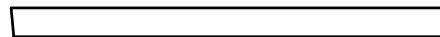


**METER BOX  
OBLIQUE VIEW**



**METER BOX COVER**

OPENING FOR  
RECESSED RADIO  
READ DEVICE



**SIDE VIEW**

**METER BOX & LID MODEL NUMBER:**  
DFW PLASTICS:  
DFWB40WBC-14-1T 63D

**NOTES:**

1. METER BOXES SHALL BE INSTALLED IN A GRASS AREA OUTSIDE OF DRIVEWAYS AND SIDEWALKS.
2. ALL BOXES AND COVERS SHALL BE POLYMER CONCRETE AND FIBERGLASS COMPOSITE UNLESS OTHERWISE APPROVED BY THE DEPARTMENT. THEY SHALL MEET ASTM D-570 STANDARDS FOR WATER ABSORPTION, GAINING NO MORE THAN 0.5% IN WEIGHT AFTER EXPOSURE TO MOISTURE AS ESTABLISHED BY THIS STANDARD.
3. ALL BOXES AND COVERS SHALL MEET THE REQUIREMENTS FOR INCIDENTAL TRAFFIC H-10 LOADING AS ESTABLISHED BY AASHTO, THE REQUIREMENTS OF ASTM C-857, SEC. A-8, AND A COMPRESSION STRENGTH OF AT LEAST 11,000 PSI.
4. ALL BOXES AND COVERS SHALL BE DESIGNED TO FIT AND INTERCHANGE WITH STANDARD CONCRETE BOXES AND COVERS. STANDARD COLOR TO BE PANTONE PURPLE.
5. ALL COVERS SHALL BE CONSTRUCTED WITH A 2 INCH HOLE FOR A TOUCHREAD DEVICE AND ITS PERTINENT HARDWARE.
6. ALL BOXES AND COVERS SHALL BE AVAILABLE BOLTED DOWN WITH ALL HARDWARE BEING STAINLESS STEEL INCLUDING ANY REPLACEABLE PARTS.
7. NO FLIP TOP LIDS ARE ALLOWED.
8. LIDS SHALL BE PANTONE PURPLE.



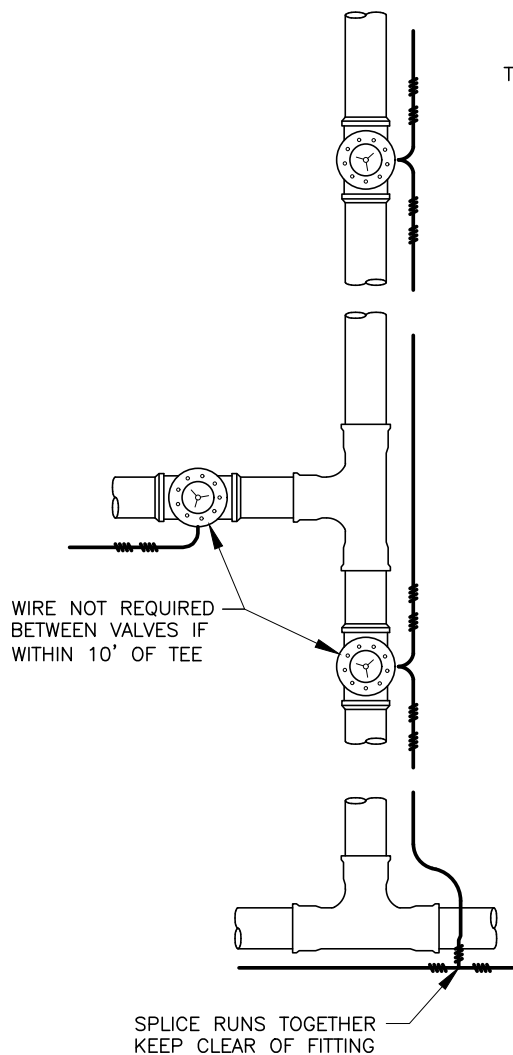
UTILITIES  
ENGINEERING DIVISION

**BOYNTON BEACH UTILITIES DEPARTMENT CONSTRUCTION STANDARDS & DETAILS**

**RECLAIMED WATER SERVICE RADIO READ FOR  
SENSUS 1-1/2" & 2" METERS**

NOT TO SCALE EFF. DATE  
05/24

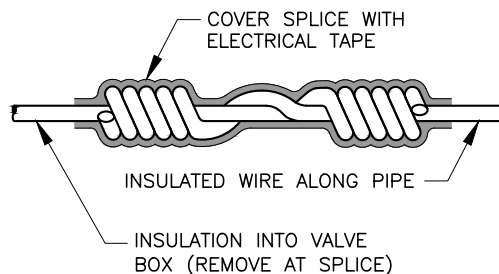
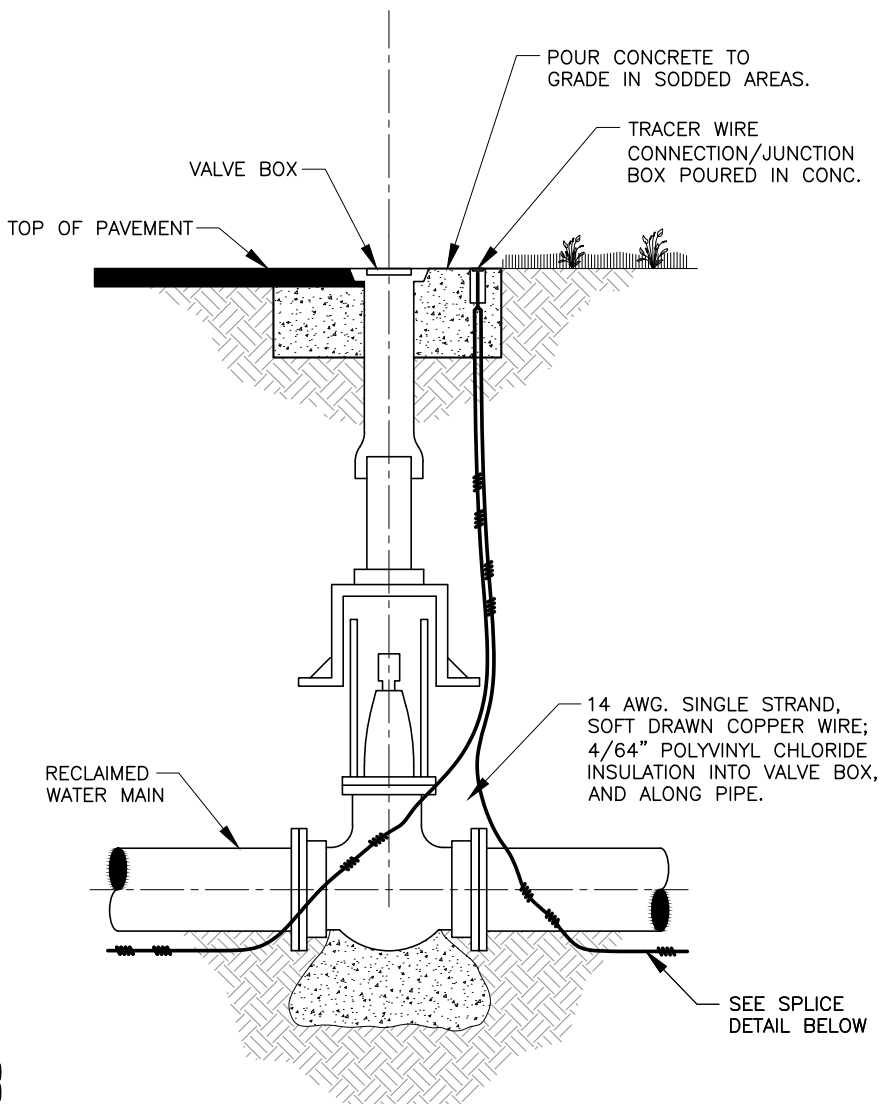
PAGE NUMBER  
**R-10**



## TYPICAL LAYOUT

### NOTES:

1. WIRE TO BE CONTINUOUS BETWEEN VALVE BOXES, EXCEPT AS NOTED.
2. LOCATING WIRE TO BE LAID AT BOTTOM OF TRENCH, NEXT TO PIPE.
3. LOCATING WIRE SHALL BE 14 AWG. SINGLE STRAND, SOFT DRAWN COPPER WIRE; 4/64" POLYVINYL CHLORIDE INSULATION INTO VALVE BOX AND ALONG PIPE.



## SPLICE DETAIL



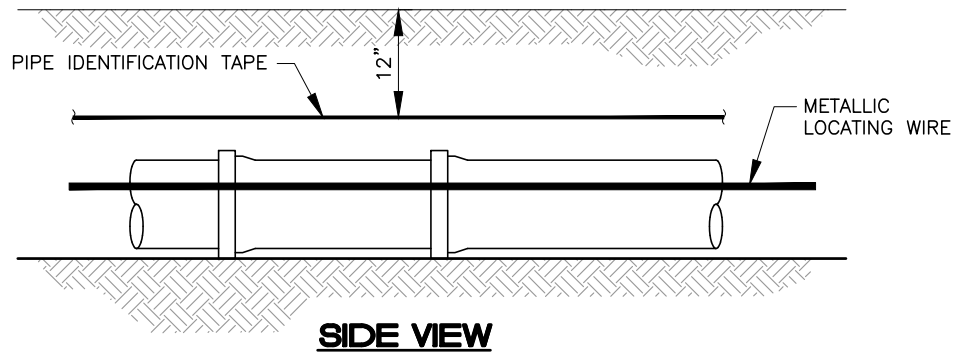
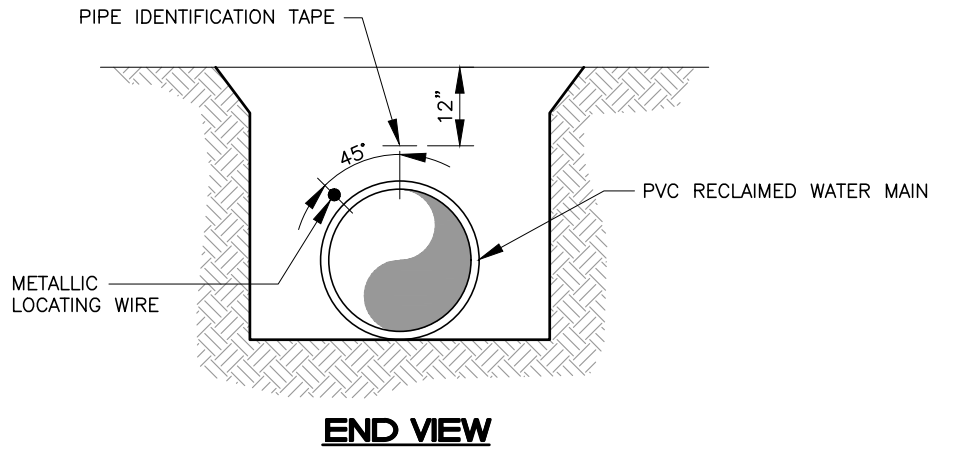
UTILITIES  
ENGINEERING DIVISION

## BOYNTON BEACH UTILITIES DEPARTMENT CONSTRUCTION STANDARDS & DETAILS

# RECLAIMED WATER MAIN LOCATING WIRE DETAIL FOR NON-METALLIC PIPE

NOT TO SCALE EFF. DATE  
05/24

PAGE NUMBER  
**R-11**



**NOTES:**

1. ALL PRESSURE PIPE SHALL REQUIRE INSULATED METALLIC LOCATING WIRE (14 GAUGE COPPER) CAPABLE OF DETECTION BY A CABLE LOCATOR AND SHALL BE BURIED DIRECTLY AGAINST PIPE.
2. LOCATING WIRE SHALL TERMINATE AT THE TOP OF EACH VALVE BOX AND BE CAPABLE OF EXTENDING 12" ABOVE TOP OF BOX IN SUCH A MANNER SO AS NOT TO INTERFERE WITH VALVE OPERATION.
3. USE DUCT TAPE AS NECESSARY TO HOLD WIRE DIRECTLY AGAINST THE PIPE.
4. ALL PRESSURE PIPE SHALL REQUIRE 3" ALUMINUM FOIL IDENTIFICATION TAPE INDICATING MATERIAL CONTAINED WITHIN PIPE (E.G...RECLAIMED WATER). TAPE SHALL BE BURIED DIRECTLY ABOVE THE CENTERLINE OF PIPE, AND UNBROKEN THE ENTIRE RUN OF PIPE.



UTILITIES  
ENGINEERING DIVISION

BOYNTON BEACH UTILITIES DEPARTMENT CONSTRUCTION STANDARDS & DETAILS

PVC PIPE LOCATING WIRE DETAIL

NOT TO SCALE      EFF. DATE  
05/24

PAGE NUMBER  
**R-12**